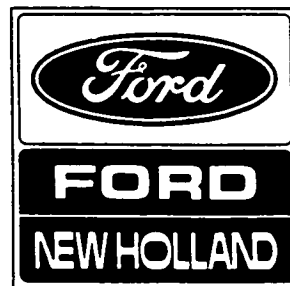


Service Parts Catalog
Liste de Pieces de Rechange
Ersatzteilliste
Catalogo Pezzi di Ricambio
Onderdelenlijst



MODEL 850

ROUND BALER

GENERAL INFORMATION

1. Whenever the terms left or right are used, it should be understood to mean from a position facing in direction of travel.
2. Throughout this manual you find common hardware not illustrated, but listed in the description column. The service part immediately preceding a hardware listing is the part using these particular items for mounting purposes. This hardware is not included with the service part or assembly when ordered as a replacement.
3. FORD NEW HOLLAND, Inc. is continually striving to improve its products. We must, therefore, reserve the right to make improvements or changes when it becomes practical and possible to do so, without incurring any obligation to make changes or additions to the equipment sold previously.

ORDERING PARTS

1. Please submit orders on the Standard Dealer Order Form and mail to your Branch Office. The form should be completely filled in and any special routing so indicated. Telephone orders, being less accurate, should be limited to "emergency situations".
2. It is advisable to consult the Service Parts Price List and/or the Historical Reference List for part number supersession, package quantity and other pertinent information.

ALWAYS USE GENUINE FORD NEW HOLLAND PARTS

FORD NEW HOLLAND INC., 500 DILLER AVENUE, NEW HOLLAND, PA 17557

CONTENTS

GROUP	PAGE NUMBER
BAR, TINE PICK-UP	16, 17
BELT DRIVE	30, 31
BOX ASSEMBLY, TWINE	48, 49, 52, 53
CAM TRACK ASSEMBLY	16, 17
CLUTCH ASSEMBLY, PICK-UP	16, 17, 18
CONVEYOR GROUP, LOWER	12, 13, 14, 15
CONVEYOR GROUP, UPPER	22, 23, 24
COUNTER, BALE OPTIONAL	42
CYLINDER ASSEMBLY	40, 41
DECAL SET	19
DRIVE ASSEMBLY	30, 31
FLOOR ASSEMBLY	8, 9
FRAME ASSEMBLY, MAIN	8, 9, 10
FRAME ASSEMBLY, PICK-UP	16, 17
FRAME ASSEMBLY, TAILGATE	26, 27
GEARBOX ASSEMBLY	32, 33, 34, 35
GUARDS, PICK-UP TINE	16, 17
HITCH ASSEMBLY	4, 5, 6
HYDRAULIC SYSTEM	36, 37
JACK ASSEMBLY	7
PICK-UP ASSEMBLY	16, 17, 18, 19
P.T.O. ASSEMBLY	4, 5, 6
SHEAVE, MAIN DRIVE	30, 31
SHIELD, LEFT SIDE	8, 10
SHIELD, PICK-UP CLUTCH	20, 21, 22
SHIELD, P.T.O.	4, 5, 6
SHIELD, SPRING GUARD	26, 27
SIZE INDICATOR KIT	42
SPINDLE ASSEMBLY	8, 9
TAILGATE GROUP	26, 27, 28
TINE, PICK-UP	16, 17
TWINE WRAPPER CONTROL, ELECTRIC	44, 45, 46
TWINE WRAPPER CONTROL, MANUAL	43
TWINE WRAPPER KIT	48 thru 55
VALVE ASSEMBLY	38, 39
WHEEL ASSEMBLY, PICK-UP	20, 21
WHEELS	8, 9
WINDGUARD ASSEMBLY	20, 22

**MODEL 850 ROUND BALER
HITCH, JACK AND P.T.O. ASSEMBLY**

Ref. No.	Part No.	No. Used	Description
1	251493	1	Hitch Weld Assembly 8 88338 Cap Screw, Hex Head, Grade 5, 1/2" x 1 1/2", N.F. 16 65319 Plain Washer, Special 8 88130 Hex Nut, Grade "C", 1/2", N.F.
2	705520	1	Support---Replaces 181693 4 87670 Cap Screw, Hex Head, Grade 5, 1/2" x 1 1/4" 4 80679 Lockwasher, 1/2" 4 84946 Hex Nut, 1/2"
3	267505	1	Yoke 1 87414 Lube Fitting, 1/4"-28, Straight
4	29214	3	Spider and Bearing Assembly 3 80711 Lube Fitting, 1/8" NPT, 67 1/2°
5	165354	2	Yoke 2 87670 Cap Screw, Hex Head, Grade 5, 1/2" x 1 1/4" 2 121512 Plain Washer, Special
6	266385	1	Shaft Weld Assembly
7	38766	1	Ball Bearing
8	269491	1	Flangette 3 88206 Cap Screw, Hex Head, Grade 5, 3/8" x 1" 3 80680 Lockwasher, 3/8" 3 84944 Hex Nut, 3/8"
9	38767	1	Collar, Bearing 1 80429 Set Screw, Hex Socket Head, Cup Point, 5/16" x 5/16"
10	165355	1	P.T.O. Assembly, Rear (Includes Ref. Nos. 4, 5 and 10 thru 16)
11	165357	1	Yoke and Tube Weld Assembly 1 87408 Lube Fitting, 1/4"-28, Straight
12	56801	2	Thrust Washer
13	56760	2	Snap Ring
14	47941	2	Nylon Bearing

SHIELD IDENTIFICATION

Identification of the two different types of shields can be easily made by noting method of construction at the weld joint. Shield Reference Nos. 15 and 18 have the tube extending over the bell at the weld joint, therefore the tube is acting as the female and the bell as the male.
Shields Reference Nos. 15A and 18A have the tube extending into the bell at the weld joint, therefore the tube is acting as the male and the bell as the female.
Reference No. 16 is used with Reference Nos. 15 and 18 while Ref. No. 16A is used with Ref. Nos. 15A and 18A.

15	49696	AR	Shield Weld Assembly, Inner (Rockwell Std. or Neapco)
15A	702353	AR	Shield Weld Assembly, Inner (Hayes-Dana) <i>USE 2 OR INSTEAD OF 12, 13, 14</i>
16	56800	AR	Bearing, Shield Support (Rockwell Std. or Neapco)
16A → 16A	702352	AR <i>USE 2 @</i>	Bearing, Shield Support (Hayes-Dana)
17	126942	<i>1 22 2nd</i>	P.T.O. Assembly, Front (Includes Ref. Nos. 4, 12, 13, 14, 18 thru 20)
18	49694	AR	Shield Weld Assembly, Outer (Rockwell Std. or Neapco)
18A	702354	AR	Shield Weld Assembly, Outer (Hayes-Dana) <i>USE 2 OR INSTEAD OF 12, 13, 14</i>
19	49693	1	Yoke and Shaft Weld Assembly
20	34780 85514	1	Yoke Assembly, Quick Detachable (Includes Ref. Nos. 21 thru 23) <i>...Please 3478</i>
21	26981	1	Spring
22	236068	1	Pin, Yoke Quick Detachable
23	40305	1	"X" Washer
24	256035	1	Shield 2 88206 Cap Screw, Hex Head, Grade 5, 3/8" x 1" 2 80702 Plain Washer, 3/8" 2 80680 Lockwasher, 3/8" 2 84944 Hex Nut, 3/8"

AR - As Required

CONTINUE

+ No longer available after present stock is used.
Service with complete Yoke Assy #85514 (Ref # 20)

- 85719 Lock Ring
- 85718 Spring
- 85717 Ball
- 85716 Slide Collar
- 27983 Retaining Ring
- + ••• 856120 Spring
- + ••• 856122 Slide Collar
- + 1 856121 Collar Segment
- 1 N.S.S. Yoke

15

MODEL 850 ROUND BALER
HITCH, JACK AND P.T.O. ASSEMBLY (CONTINUED)

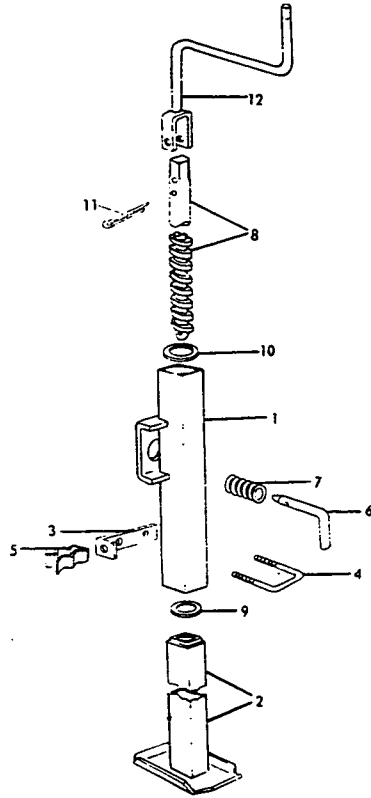
Ref. No.	Part No.	No. Used	Description
25	432425 234690	1	Jack Assembly (See Page 7 for Component Breakdown) --- Repl 192#25
26	128542	1	Collar, Jack Attaching 1 81824 Pin, Drive Lock, 5/16" x 2 1/2"
27	42365*	2	Clamp 1 88950 Machine Bolt, Hex Head, 3/8" x 1 3/4" 1 80702 Plain Washer, 3/8" 1 80680 Lockwasher, 3/8" 1 84944 Hex Nut, 3/8"

* Used on and above Serial No. 363542

AR - As Required

MODEL 850 ROUND BALER

JACK ASSEMBLY

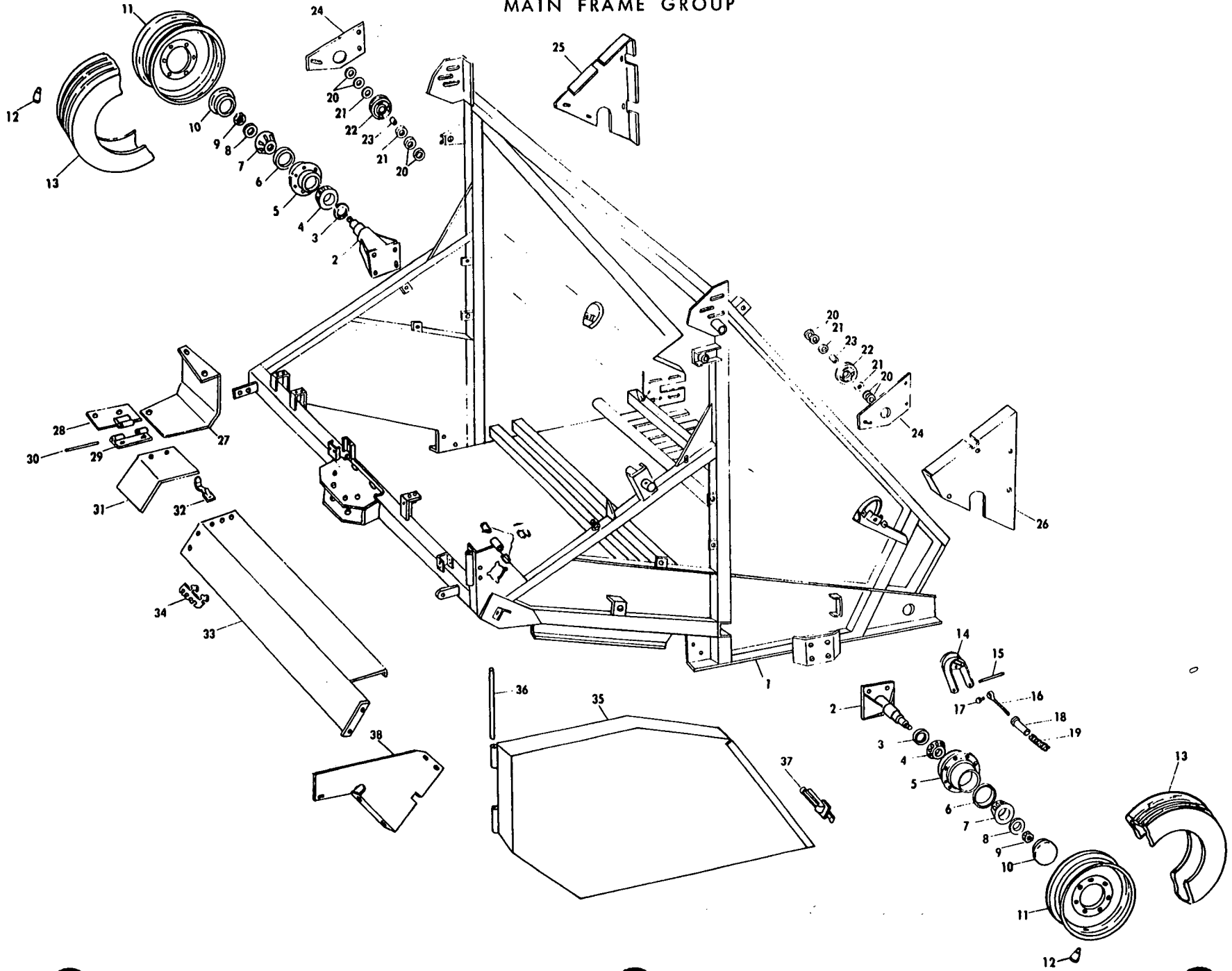


Ref. No.	Part No.	No. Used	Description
	132425		JACK ASSEMBLY (Includes Ref. Nos. 1 thru 11 and Spring Pin 87406)
1	122483	1	Jack Weld Assembly 1 87414 Lube Fitting, 1/4", Straight
2	218788	1	Tube Weld Assembly, Inside
3	217392	1	Bracket
4	217391	1	"U" Bolt 2 84060 Hex Locknut, 1/4"
5	163902	1	Spring Clip
			88503 1 88503 Cap Screw, Hex Head, Grade 5, 1/4" x 1/2"
			1 84922 Speed Nut, "U" Type, 1/4"
6	128375	1	Jack Pin 1 87455 Spring Pin, 1/8" x 1"
7	26538	1	Spring
8	218784	1	Jack Screw 1 87336 Spring Pin, 3/16" x 7/8"
9	50600	1	Plain Washer, Special
10	61469 84239	1	Special Plain Washer, 3/4" ⁴ / ₆₄ " I.D. x 2" O.D. 19.4 x 50.8 mm
11	87398	1	Cotter Pin, 3/16" x 1 1/4"
12	169703	1	Crank Weld Assembly 1 87406 Roll Pin, 1/4" x 1 1/2" 1 88337 Cap Screw, Hex Head, Grade 5, 3/8" x 2" 2 80702 Plain Washer, 3/8" 1 88902 Hex Locknut, 3/8"

MODEL 850 ROUND BALER

MAIN FRAME GROUP

8



MODEL 850 ROUND BALER
MAIN FRAME GROUP

Ref. No.	Part No.	No. Used	Description
1	708957*	1	Frame Weld Assembly (Includes (2) Ref. No. 1B)
		9	87414 Lube Fitting, 1/4"-28, Straight
	577486**	1	Frame Weld Assembly
		9	87414 Lube Fitting, 1/4"-28, Straight
	570504*	1	Frame Weld Assembly ---Replaces 284904 (Incl. (2) Ref. No. 1A)
1B	84462	2	Bushing 87414 Lube Fitting, 1/4"-28, Straight
1A	50641	2	Bushing (Refer to page 31, Ref. 1A)
2	257470	2	Spindle Weld Assembly
		8	87689 Cap Screw, Hex Head, Grade 5, 1/2" x 1 1/2"
		8	80679 Lockwasher, 1/2" L 80700 Plain Washer, 1/2"
		8	84946 Hex Nut, 1/2"
3	166300	2	Oil Seal
4	121506	2	Cone and Cup, Tapered Roller Bearing
5	166327	2	Hub
6	36723	2	Cup, Tapered Roller Bearing
7	36726	2	Cone, Tapered Roller Bearing
8	116150	2	Plain Washer, Special
9	280172	2	Hex Nut, Slotted, 7/8", N.F.
		2	80754 Cotter Pin, 3/16" x 1 1/2"
10	249128	2	Hub Cap
11	143823	2	Disc Wheel, Standard
		12	198056 Wheel Bolt
	187084	2	Disc Wheel, Flotation
		12	198056 Wheel Bolt
12	182692	2	Stem, Tubeless Tire Air Valve, for Standard Wheel
	196033	2	Stem, Tubeless, Tire Air Valve, for Flotation Wheel
13	228813	2	Tire, Ribbed Tread, Code 1-1, 4 Ply Tubeless, 11.00 x 14 (Standard) (Purchase Locally)
	226871	2	Tire, Terra-Rib, 8 Ply Tubeless, 31 x 13.50-15 (Flotation)
14	251746	2	Cam Assembly
15	161097	2	Rod
		AR	80700 Plain Washer, 1/2"
		4	80744 Cotter Pin, 5/32" x 1"
16	708460	2	Eyebolt
		2	80702 Plain Washer, 3/8"
		4	84944 Hex Nut, 3/8"
17	25858	2	Rivet, Drilled
		2	87397 Cotter Pin, 3/16" x 1"
18	244472	2	Tube Weld Assembly
19	26392	2	Spring
20	87367	8	Plain Washer, 1"
21	26402	2	Plain Washer, Special
22	261615	2	Idler Assembly (Includes (1) Ref. No. 23)
		2	87414 Lube Fitting, 1/4"-28, Straight
		2	80754 Cotter Pin, 3/16" x 1 1/2"
23	141451	2	Bushing
24	705895+	2	Shield
		6	88574 Cap Screw, Hex Head, Grade 5, 5/16" x 1/2"
		2	80664 Plain Washer, 5/16"
		6	80681 Lockwasher, 5/16"

AR As Required

- Used on and above Serial No. 434932
- + Used on and above Serial No. 424811
- * Used on and below Serial No. 404871
- ** Used between Serial No. 404872 and Serial No. 434931

CONTINUE

MODEL 850 ROUND BALER
MAIN FRAME GROUP (CONTINUED)

Ref. No.	Part No.	No. Used	Description
25	252730	1	Shield, Right Hand 5 88832 Carriage Bolt, Grade 5, 1/4" x 3/4" 5 80701 Plain Washer, 1/4" 5 80682 Lockwasher, 1/4" 5 84942 Hex Nut, 1/4"
26	705694	1	Shield, Left Hand ---Replaces 252729 5 88832 Carriage Bolt, Grade 5, 1/4" x 3/4" 5 80701 Plain Washer, 1/4" 5 80682 Lockwasher, 1/4" 5 84942 Hex Nut, 1/4"
27	283536***	1	Shield
28	256234	1	Plate Weld Assembly, Hinge
29	229709	1	Hinge
30	257286	1	Pin, Hinge
31	252724	1	Shield 2 87966 Cap Screw, Hex Head, Grade 5, 5/16" x 1/2" 2 80681 Lockwasher, 5/16" 2 84943 Hex Nut, 5/16"
32	47325	1	Snap Fastener 1 84821 Machine Screw, Truss Head, #10-24 x 1/2" 1 80684 Lockwasher, #10 1 87304 Hex Nut, #10-24
33	252725**	1	Shield Weld Assembly 6 87872 Cap Screw, Hex Head, Grade 5, 5/16" x 3/4" 2 80664 Plain Washer, 5/16" 6 80681 Lockwasher, 5/16"
	709223*	1	Shield Weld Assembly 6 87872 Cap Screw, Hex Head, Grade 5, 5/16" x 3/4" 2 80664 Plain Washer, 5/16" 6 80681 Lockwasher, 5/16"
34	52367	1	Holder, Shear Bolt (See Page 31, Ref. No. 7 for Shear Bolt)
35	257598	1	Shield Weld Assembly
36	259542	1	Pin, Hinge
37	244457	1	Clamp 2 84821 Machine Screw, Truss Head, #10-24 x 1/2" 2 80684 Lockwasher, #10 2 87304 Hex Nut, #10-24
38	574461*	1	Shield 4 87872 Cap Screw, Hex Head, Grade 5, 5/16" x 3/4" 1 34097 Machine Bolt, Hex Head, Full Thread, 5/16" x 1 1/2" 5 80664 Plain Washer, 5/16" 5 80681 Lockwasher, 5/16" 5 84943 Hex Nut, 5/16" 1 280141 Hex Locknut, Grade C, 5/16"

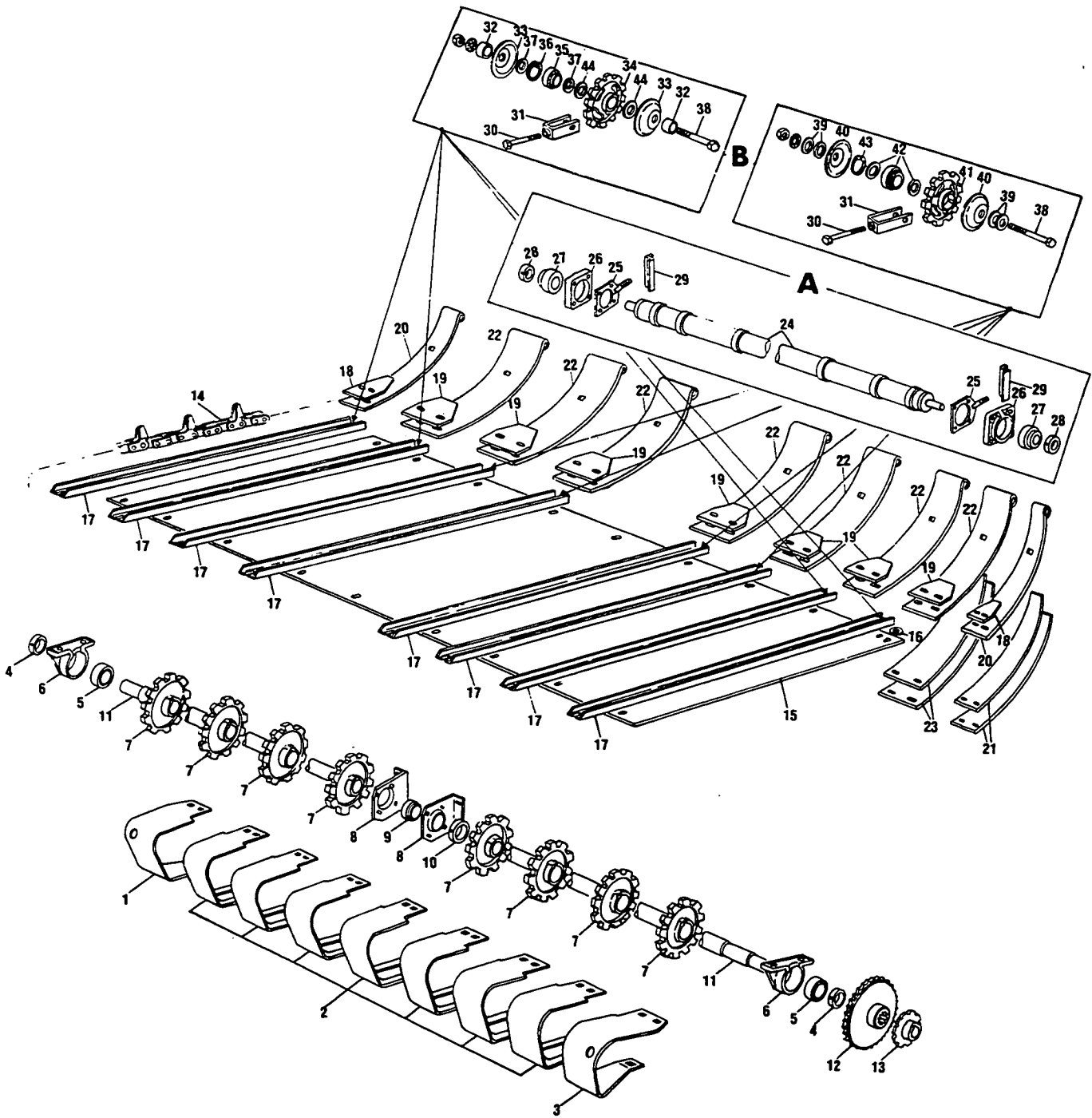
*** Used on and above Serial No. 348839

* Used on and above Serial No. 434932

** Used on and below Serial No. 434931

NOTES

MODEL 850 ROUND BALER
LOWER CONVEYOR GROUP



MODEL 850 ROUND BALER
LOWER CONVEYOR GROUP

Ref. No.	Part No.	No. Used	Description
1	257099+	1	Guard, Right Hand 3 88682 Carriage Bolt, Grade 5, 3/8" x 1" 3 80680 Lockwasher, 3/8" 3 84944 Hex Nut, 3/8"
	705692++	1	Guard, Right Hand 3 88682 Carriage Bolt, Grade 5, 3/8" x 1" 3 80680 Lockwasher, 3/8" 3 84944 Hex Nut, 3/8"
2	256528	7	Guard, Center 28 88682 Carriage Bolt, Grade 5, 3/8" x 1" 28 80680 Lockwasher, 3/8" 28 84944 Hex Nut, 3/8"
3	257098	1	Guard, Left Hand 3 88682 Carriage Bolt, Grade 5, 3/8" x 1" 3 80680 Lockwasher, 3/8" 3 84944 Hex Nut, 3/8"
	705693++	1	Guard, Left Hand 3 88682 Carriage Bolt, Grade 5, 3/8" x 1" 3 80680 Lockwasher, 3/8" 3 84944 Hex Nut, 3/8"
4	131377	2	Collar, Bearing 2 80425 Set Screw, Hex Socket Head, Cup Point, 3/8" x 3/8"
5	131573	2	Ball Bearing
6	131576	2	Housing, Bearing 2 87415 Lube Fitting, 1/4"-28, 90° 4 88551 Cap Screw, Hex Head, Grade 5, 1/2" x 1 3/4" 8 65319 Plain Washer, Special, Harden 4 80679 Lockwasher, 1/2" 4 84946 Hex Nut, 1/2"
7	258832	8	Sprocket, 13 Tooth 8 606156 Gib Key
8	256527	2	Support, Bearing 4 88206 Cap Screw, Hex Head, Grade 5, 3/8" x 1" 4 80702 Plain Washer, 3/8" 4 80680 Lockwasher, 3/8" 4 84944 Hex Nut, 3/8"
			Use the following to clamp bearing 4 87545 Carriage Bolt, 1/2" x 1" 4 87364 Plain Washer, 1/2" 4 80679 Lockwasher, 1/2" 4 84946 Hex Nut, 1/2"
9	49633	1	Ball Bearing
10	45631	1	Collar, Bearing 1 80425 Set Screw, Hex Socket Head, Cup Point, 3/8" x 3/8"
11	257269	1	Shaft, Drive
12	257272	1	Sprocket Weld Assembly, 31 Tooth 1 87616 Set Screw, Square Head, Cup Point, 3/8" x 3/4" 1 84969 Hex Jam Nut, 3/8"
	54478	1	Sprocket, 11 Tooth 1 80768 Key, Woodruff, #15, 1/4" x 1" 1 26402 Plain Washer, Special 1 80754 Cotter Pin, 3/16" x 1 1/2"

+ Used on below Serial No. 434931
++ Used on above Serial No. 434932

CONTINUE

MODEL 850 ROUND BALER
LOWER CONVEYOR GROUP (CONTINUED)

Ref. No.	Part No.	No. Used	Description
14	710395 710395 638830 (OPTIONAL)	8	Chain Assembly, Gathering, CA-550, 78 Pitches ---Replaces 256639 and/or 577211 AR 43278 Link, Regular Roller AR 262268 Link, Attachment (Used in Chain Assembly 256639) AR 702378 Link, Attachment (Used in Chain Assembly 577211 or 710395) AR 267630 Link, Connector AR 285725 "S" Pin (2 used in each Part No. 267630) AR 40242 Link, Offset (May be used to shorten chain assembly)
15	712116	AR 1	Floor ---Replaces 256979
16	608036 577585	AR 8	Spacer Panel, Floor Wear
17	576407	8	Channel 8 87530 Plow Bolt, #3 Head, 5/16" x 1 1/4" 8 87044 Plow Bolt, #3 Head, 5/16" x 1" 16 80681 Lockwasher, 5/16"
18	257379	2	Stop, Spring, Outer
19	257380	7	Stop, Spring, Inner
20	257378	2	Leaf Spring, Outer Top
21	257377	4	Leaf Spring, Outer Bottom 4 87494 Carriage Bolt, 3/8" x 1 1/4" 280430 → 2 87464 Carriage Bolt, Grade 5, 3/8" x 3/4" 2 80702 Plain Washer, 3/8" 4 80680 Lockwasher, 3/8" 4 84944 Hex Nut, 3/8" 2 88902 Hex Locknut, 3/8"
22	257375	7	Leaf Spring, Inner Top
23	257376	14	Leaf Spring, Inner Bottom 14 87494 Carriage Bolt, 3/8" x 1 1/4" 280430 → 7 87464 Carriage Bolt, Grade 5, 3/8" x 3/4" 14 80680 Lockwasher, 3/8" 14 84944 Hex Nut, 3/8" 7 88902 Hex Locknut, 3/8"

INSET "A"

APPLICABLE ON AND BELOW SERIAL NO. 308233

24	257183	1	Tube Weld Assembly
25	238107	2	Plate Weld Assembly 2 80700 Plain Washer, 1/2" 2 84236 Hex Locknut, 1/2"
26	66488	2	Housing Assembly, Bearing 2 80709 Pipe Plug, 1/8" 8 87409 Machine Bolt, Round Head, Short Square Neck, 1/2" x 1 1/2" 8 80679 Lockwasher, 1/2" 8 84946 Hex Nut, 1/2"
27	52443	2	Ball Bearing
28	52444	2	Collar, Bearing 1 80441 Set Screw, Hex Socket Head, Cup Point, 3/8" x 1/2"
29	265344	2	Angle

INSET "B"

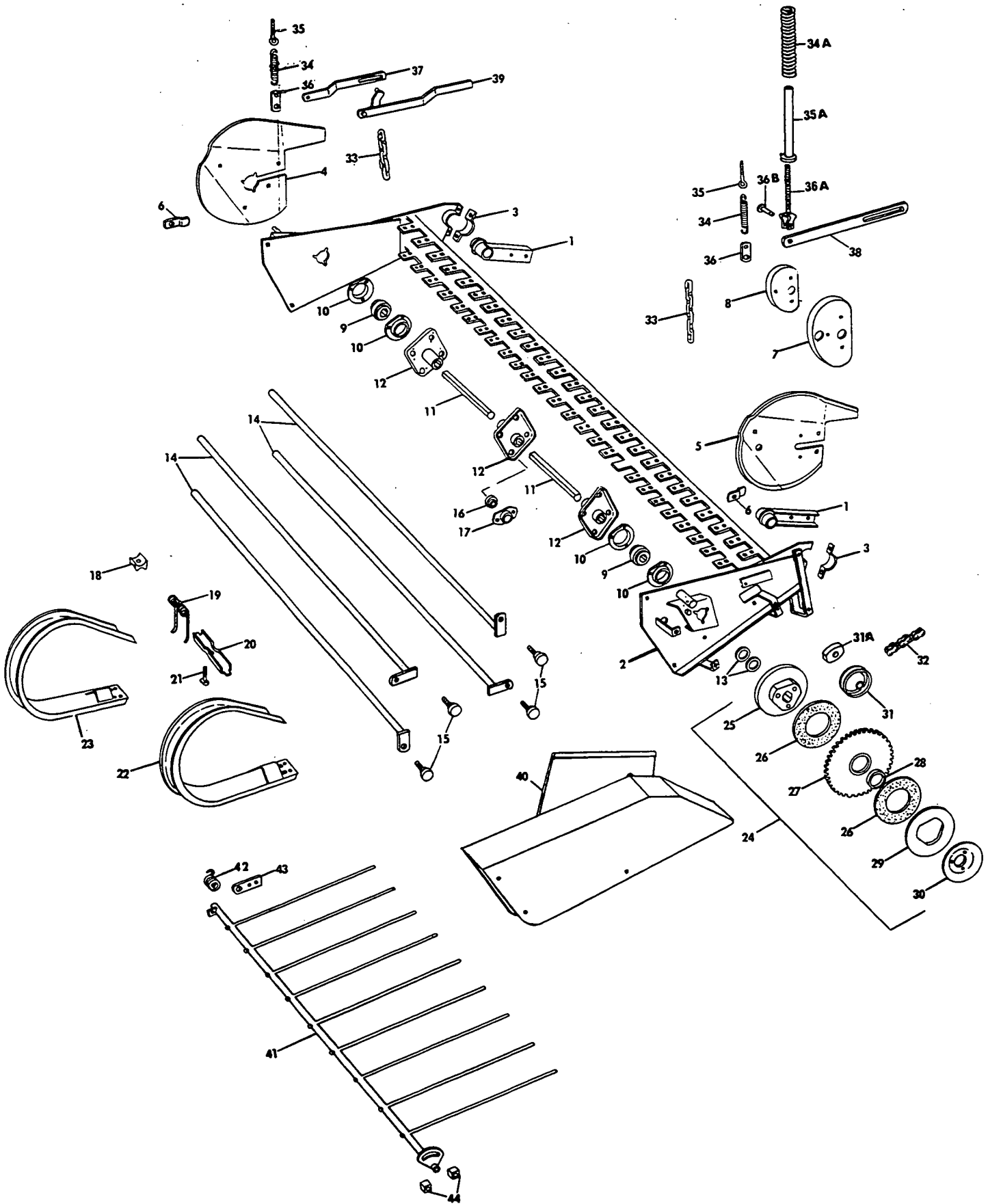
APPLICABLE ABOVE SERIAL NO. 308234

30	118804	8	Cap Screw, Hex Head, 1/2" x 3 1/2", Full Thread
31	268634	8	Clevis Weld Assembly
32	172434	8	Spacer, Bushing

MODEL 850 ROUND BALER
LOWER CONVEYOR GROUP (CONTINUED)

Ref. No.	Part No.	No. Used	Description
33	245312	8	Shield
34	88270571569	4	Sprocket, Idler ---Replaces 236590 and 571569
35	253624	4	Ball Bearing
36	66967	4	Ring, Retaining
37	58792	8	Plain Washer, Special
38	88680	8	Cap Screw, Hex Head, Grade 5, 3/4" x 3 3/4"
			16 87381 Plain Washer, 3/4"
			8 87340 Lockwasher, 3/4"
			8 84948 Hex Nut, 3/4"
39	26260	16	Plain Washer, Special
40	259925	8	Shield
41	258273571571	4	Sprocket, Idler ---Replaces 259911 571571
42	(1) 701298 713309 (2) 702018	4	Bearing Kit (Includes Ball Bearing and (2) Plain Washers) 713309 REPLACES
43	268118	4	Ring, Retaining
44	249100	8	Plain Washer, Special

MODEL 850 ROUND BALER
PICK-UP GROUP



MODEL 850 ROUND BALER
PICK-UP GROUP

Ref. No.	Part No.	No. Used	Description
1	245642	2	Support Weld Assembly 4 87670 Cap Screw, Hex Head, Grade 5, 1/2" x 1 1/4" 4 80679 Lockwasher, 1/2" 4 84946 Hex Nut, 1/2"
2	236454+	1	Frame Weld Assembly, Pick-up
	577223++	1	Frame Weld Assembly, Pick-up 2 571382 Lube Fitting, 1/4", Straight, Long
	704032+++	1	Frame Weld Assembly, Pick-up 2 571382 Lube Fitting, 1/4", Straight
3	245308	2	Strap 4 87670 Cap Screw, Hex Head, Grade 5, 1/2" x 1 1/4" 4 80679 Lockwasher, 1/2" 4 87364 Plain Washer, 1/2"
4	236448+	1	Side Sheet Assembly, Right Hand 3 88682 Carriage Bolt, Grade 5, 3/8" x 1" 3 80680 Lockwasher, 3/8" 3 84944 Hex Nut, 3/8"
	577437++++	1	Side Sheet Assembly, Right Hand 3 88682 Carriage Bolt, Grade 5, 3/8" x 1" 3 80680 Lockwasher, 3/8" 3 84944 Hex Nut, 3/8"
5	236449+	1	Side Sheet Assembly, Left Hand 2 88682 Carriage Bolt, Grade 5, 3/8" x 1" 2 80680 Lockwasher, 3/8" 2 84944 Hex Nut, 3/8"
	577438++++	1	Side Sheet Assembly, Right Hand 2 88682 Carriage Bolt, Grade 5, 3/8" x 1" 2 80680 Lockwasher, 3/8" 2 84944 Hex Nut, 3/8"
6	40662++++	2	Bracket 2 84467 Machine Screw, Truss Head, 1/4" x 1/2" 2 80682 Lockwasher, 1/4" 2 84942 Hex Nut, 1/4"
7	136736	1	Cam, Outer
8	136735	1	Cam, Inner 3 88682 Carriage Bolt, Grade 5, 3/8" x 1" 3 80680 Lockwasher, 3/8" 3 84944 Hex Nut, 3/8"
9	121602	2	Ball Bearing
10	578189	4	Flangette ---Replaces 58823 6 88682 Carriage Bolt, Grade 5, 3/8" x 1" 6 80680 Lockwasher, 3/8" 6 84944 Hex Nut, 3/8"
11	236440	1	Shaft 2 87399 Cotter Pin, 3/16" x 1 3/4"
12	136525	3	Disc Weld Assembly 6 87616 Set Screw, Hex Socket Head, Cup Point, 3/8" x 3/4" 6 84969 Hex Jam Nut, 3/8"
13	130357	AR	Plain Washer, Special
14	136554	4	Pipe Weld Assembly
15	249062	4	Cam Follower 8 87364 Plain Washer, 1/2" 4 129987 Hex Locknut, 1/2" U.N.F. 88130 <i>End C</i>

AR - As Required

+ Used on and below Serial No. 404871

++ Used between Serial No. 404872 and 434931

+++ Used on and above Serial No. 434932

++++ Used on and above Serial No. 404872

CONTINUE

MODEL 850 ROUND BALER
PICK-UP GROUP (CONTINUED)

Ref. No.	Part No.	No. Used	Description
16	54770	12	Ball Bearing 12 136521 Cotter Pin, 1/4" x 1 3/4", Harden
17	54695	12	Carrier, Bearing 24 84867 Carriage Bolt, 3/8" x 3/4" 24 80680 Lockwasher, 3/8" 24 84944 Hex Nut, 3/8"
18	136137	52	Spacer, Tooth
19	131673	52	Finger, Pick-up
20	134921	52	Bracket, Pick-up Tooth
21	130891	52	Bolt, Special 52 87382 Hex Locknut, 5/16"
22	127361+	1	Guard Weld Assembly **4 268412 Machine Screw, Thread Forming, Hex Serrated Head, Type "Z", 5/16" x 5/8" **4 246348 Machine Screw, Thread Forming, Hex Serrated Head, Type "Z", 1/4" x 5/8"
	49792++	1	Guard Weld Assembly 4 246348 Machine Screw, Thread Forming, Hex Serrated Head, Type "Z", 1/4" x 5/8"
23	268419+	26	Guard Weld Assembly *104 268412 Machine Screw, Thread Forming, Hex Serrated Head, Type "Z", 5/16" x 5/8" **104 246348 Machine Screw, Thread Forming, Hex Serrated Head, Type "Z", 1/4" x 5/8"
	268418++	26	Guard Weld Assembly 104 268412 Machine Screw, Thread Forming, Hex Serrated Head, Type "Z", 5/16" x 5/8" 104 246348 Machine Screw, Thread Forming, Hex Serrated Head, Type "Z", 1/4" x 5/8"
24	136542	1	Slip Clutch Assembly (Includes Ref. Nos. 25, 26, 27, 29 and 30)
25	121091	1	Hub, Clutch
26	127434	2	Friction Disc
27	136560	1	Sprocket Assembly (Includes Ref. No. 28)
28	49686	1	Bushing
29	49683	1	Clutch Plate
30	121092	1	Spring Washer 3 88011 Cap Screw, Hex Head, Grade 5, 3/8" x 1 1/4"
31	35469+	1	Idler Assembly, Chain 1 88004 Machine Bolt, Round Head, Short Square Neck, 1/2" x 2 1/2" 2 80700 Plain Washer, 1/2" 1 80679 Lockwasher, 1/2" 1 84946 Hex Nut, 1/2"
31A	166704++	1	Idler, Block 1 88037 Machine Bolt, Round Head, Short Square Neck, 1/2" x 2 3/4" 2 80700 Plain Washer, 1/2" 1 80679 Lockwasher, 1/2" 1 84946 Hex Nut, 1/2"
32	141495	1	Chain Assembly, Pick-up Drive, RC-A2050, 42 Pitches AR 25810 Link, Regular Roller AR 25193 Link, Coupler, Cotter Pin Type

- * Used on and below Serial No. 363541
- ** Used on and above Serial No. 363542
- + Used on and below Serial No. 404871
- ++ Used on and above Serial No. ~~404871~~ 404872

404872 CONTINUE

MODEL 850 ROUND BALER
PICK-UP GROUP (CONTINUED)

Ref. No.	Part No.	No. Used	Description
33	268382	2	Chain 2 87494 Carriage Bolt, 3/8" x 1 1/4" 2 80702 Plain Washer, 3/8" <i>88206 Cap Screw, Hex Head, Grade 5, 3/8" x 1"</i> 2 80680 Lockwasher, 3/8" 2 84944 Hex Nut, 3/8"
34	575902§	2	Spring ---Replaces 267390
34A	50564§§	2	Spring
35	63769§	2	Eyebolt 2 84970 Hex Jam Nut, 1/2" 2 84946 Hex Nut, 1/2"
35A	573003§§	2	Tube Weld Assembly
36	246219§	2	Tab 1 80299 Plain Washer, 5/8" 2 87398 Cotter Pin, 3/16" x 1 1/4"
36A	573004§§	2	Clevis Weld Assembly 4 84946 Hex Nut, 1/2"
36B	12192§§ 76817	2	Pin, Clevis 2 87364 Plain Washer, 1/2" 2 80755 Cotter Pin, 1/8" x 1"
37	246226	1	Arm, Lift, Right Hand
38	283517*	1	Arm, Pick-up Left Hand 3 80299 Plain Washer, 5/8" 2 80755 Cotter Pin, 1/8" x 1"
39	246233	1	Handle Weld Assembly 1 80299 Plain Washer, 5/8" 1 87398 Cotter Pin, 3/16" x 1 1/4" 1 87366 Plain Washer, 7/16" 1 80754 Cotter Pin, 3/16" x 1 1/2"
40	257597	1	Shield Weld Assembly 4 87872 Cap Screw, Hex Head, Grade 5, 5/16" x 3/4" 4 80664 Plain Washer, 5/16" 4 80681 Lockwasher, 5/16"
41	574001	1	Windguard Weld Assembly ---Replaces 284166 2 87041 Cotter Pin, 1/4" x 1 3/4"
42	28285	1	Spring
43	9618091 251533-	1	Plate, R.H. <i>REPLACES 251533 ECR 26846</i> 2 88682 Carriage Bolt, Grade 5, 3/8" x 1" 2 80680 Lockwasher, 3/8" 2 84944 Hex Nut, 3/8"
44	44612	2	Spacer 2 88011 Cap Screw, Hex Head, Grade 5, 3/8" x 1 1/4" 2 34187 Plain Washer, Special 2 80680 Lockwasher, 3/8" 2 84944 Hex Nut, 3/8"

* Used on and above Serial No. 307911

§ Used on and below Serial No. 434931

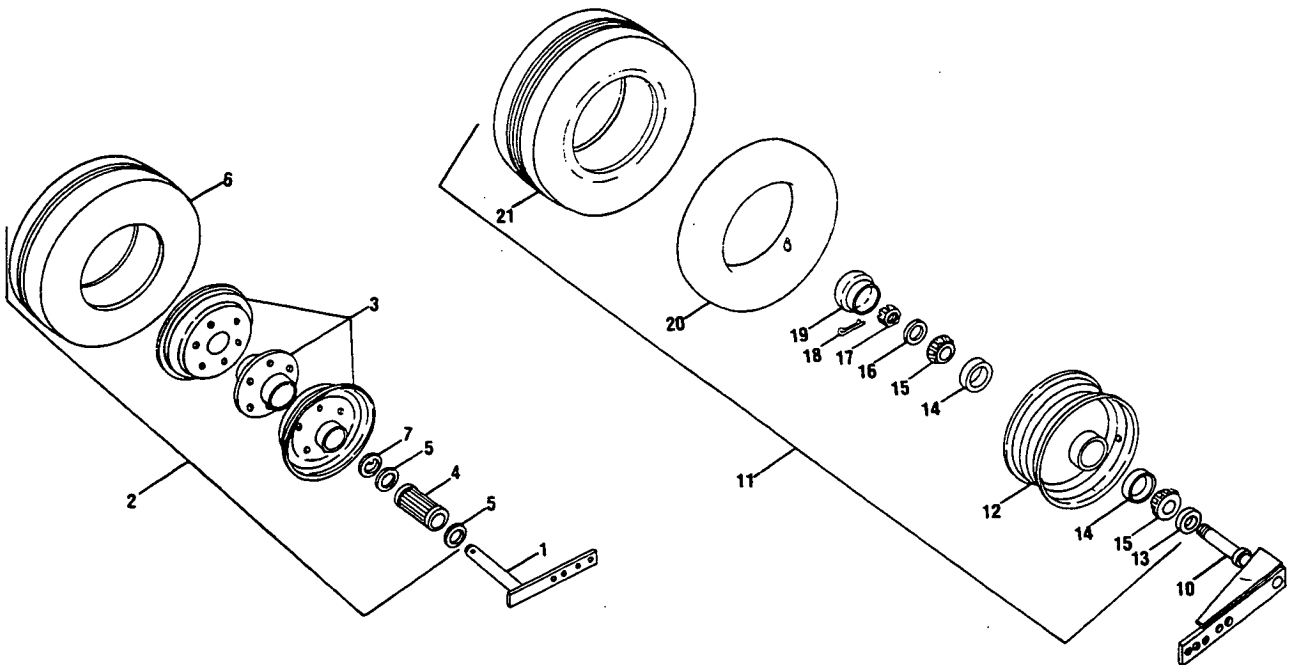
§§ Used on and above Serial No. 434932

DECAL SET

262101

Decal Set

MODEL 850 ROUND BALER
PICK-UP WHEEL ASSEMBLIES



MODEL 850 ROUND BALER
PICK-UP WHEEL ASSEMBLIES

Ref. No.	Part No.	No. Used	Description
STANDARD TIRE AND WHEEL GROUP			
1	578822	1	Bracket Weld Assembly ---Replaces 263559 2 88551 Cap Screw, Hex Head, Grade 5, 1/2" x 1 3/4" 2 80679 Lockwasher, 1/2"
2	134021	1	Wheel Assembly with Tire (Includes Ref. Nos. 3 and 6) 2 84239 Plain Washer, 3/4" 1 87398 Cotter Pin, 3/16" x 1 1/4"
3	134020	1	Wheel Assembly less Tire (Includes Ref. Nos. 4 and 5) 2 84239 Plain Washer, 3/4" 1 87398 Cotter Pin, 3/16" x 1 1/4"
4	134018	1	Roller Bearing
5	134019	2	Washer, Seal
6	127561	1	Tire, 12 x 3.00 Extra Heavy Duty, Semi-Pneumatic Rib Tread, Zero Pressure
7	41261	1	Washer, Notched

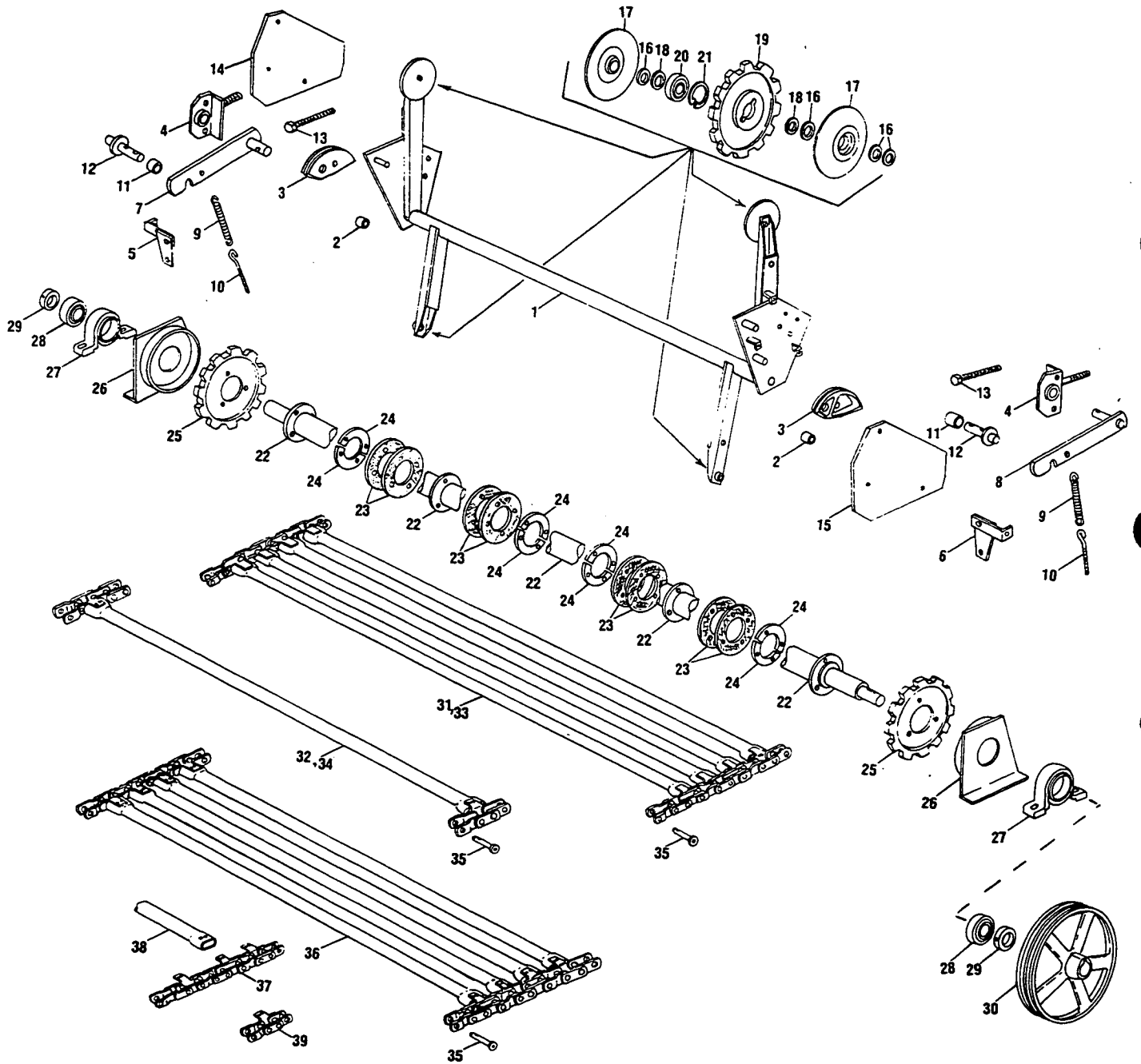
ITEMS NOT ILLUSTRATED

80337	6	Cap Screw, Hex Head, 1/4" x 1 1/4", N.F. (Fasten Rims to Hub)
87227	6	Cap Screw, Hex Head, 1/4" x 1/2", N.F. (Fasten Rim Halves together)
80682	12	Lockwasher, 1/4"
84949	12	Hex Nut, 1/4", N.F.

FLOTATION TIRE AND WHEEL GROUP

10	574472	1	Support Weld Assembly 2 88551 Cap Screw, Hex Head, Grade 5, 1/2" x 1 3/4" 2 80679 Lockwasher, 1/2"
11	578148 607451	1	Wheel Assembly with Tire (Incl. Ref. Nos. 12 thru 15 and 19 thru 21) --- <i>Replaces 578148</i>
12	136377	1	Wheel Assembly
13	136376	1	Oil Seal
14	132709	2	Cup, Tapered Roller Bearing
15	132710	2	Cone, Tapered Roller Bearing
16	26301	1	Plain Washer, Special
17	143183	1	Hex Nut, Slotted, 1", N.F.
18	87398	1	Cotter Pin, 3/16" x 1 1/4"
19	200734	1	Hub Cap
20	25447	1	Inner Tube, 8 x 4.00 (Purchase Locally)
21	25448 36235	1	Tire, Smooth Tread, 4 Ply, 8 x 4.00

MODEL 850 ROUND BALER
UPPER CONVEYOR GROUP



MODEL 850 ROUND BALER
UPPER CONVEYOR GROUP

Ref. No.	Part No.	No. Used	Description
1	707507*	1	Tube Weld Assembly ---Replaces 257125
	709000**	1	Tube Weld Assembly
2	12158	2	Roller
		2	87630 Cap Screw, Hex Head, Grade 5, 5/8" x 2 1/2"
		2	84057 Lockwasher, 5/8"
		2	130358 Plain Washer, Special
3	261613	2	Pivot
		4	87670 Cap Screw, Hex Head, Grade 5, 1/2" x 1 1/4"
		4	80679 Lockwasher, 1/2"
		4	84946 Hex Nut, 1/2"
4	261886*	2	Support Weld Assembly
		4	87494 Carriage Bolt, 3/8" x 1 1/4"
		4	80702 Plain Washer, 3/8"
		4	80680 Lockwasher, 3/8"
		4	84944 Hex Nut, 3/8"
		4	84970 Hex Jam Nut, 1/2"
5	263180*	1	Stop Weld Assembly, Right Hand
		1	88011 Cap Screw, Hex Head, Grade 5, 3/8" x 1 1/4"
		1	88206 Cap Screw, Hex Head, Grade 5, 3/8" x 1"
		2	80680 Lockwasher, 3/8"
		2	84944 Hex Nut, 3/8"
6	263179*	1	Stop Weld Assembly, Left Hand
		1	88011 Cap Screw, Hex Head, Grade 5, 3/8" x 1 1/4"
		1	88206 Cap Screw, Hex Head, Grade 5, 3/8" x 1"
		2	80680 Lockwasher, 3/8"
		2	84944 Hex Nut, 3/8"
7	261884*	1	Arm Weld Assembly, Right Hand
		1	87569 Lube Fitting, 1/4"-28, 45°
		AR	87365 Plain Washer, 5/8"
		1	80755 Cotter Pin, 1/8" x 1"
8	261883*	1	Arm Weld Assembly, Left Hand
		1	87569 Lube Fitting, 1/4"-28, 45°
		AR	87365 Plain Washer, 5/8"
		1	80755 Cotter Pin, 1/8" x 1"
9	575988*	2	Spring ---Replaces 263026
10	46041*	2	Eyebolt
		4	84944 Hex Nut, 3/8"
11	26307*	2	Spacer
12	261892*	2	Pin Weld Assembly
		2	87414 Lube Fitting, 1/4"-28, Straight
		2	87334 Pin, Roll, 1/4" x 1 1/4"
13	118804**	2	Machine Bolt, Hex Head, Full Threaded, 1/2" x 3 1/2"
14	705898+	1	Shield Weld Assembly, Right Hand
		3	88574 Cap Screw, Hex Head, Grade 5, 5/16" x 1/2"
		3	80681 Lockwasher, 5/16"
15	705899+	1	Shield, Left Hand
		3	88574 Cap Screw, Hex Head, Grade 5, 5/16" x 1/2"
		3	80681 Lockwasher, 5/16"
16	249100	16	Plain Washer, Special
17	245312	8	Shield
18	58792	8	Plain Washer, Special

AR - As Required

* Used on and below Serial No. 434931

** Used on and above Serial No. 434932

+ Used on and above Serial No. 424811

CONTINUE

MODEL 850 ROUND BALER
UPPER CONVEYOR GROUP (CONTINUED)

Ref. No.	Part No.	No. Used	Description
19 288270571569		4	Sprocket, Idler, 13 Tooth ---Replaces 236590 <i>and 571569</i> 4 87337 Cap Screw, Hex Head, Grade 5, 3/4" x 3" 4 87340 Lockwasher, 3/4" 4 84948 Hex Nut, 3/4"
20	253624	4	Ball Bearing
21	66967	4	Ring, Retaining
22	236212	1	Shaft Weld Assembly
23	265328	8	Washer, Rubber Tire Carcass
24	265329	8	Plate 8 88371 Cap Screw, Hex Head, Grade 5, 5/16" x 3" 8 87382 Hex Locknut, 5/16"
25	236220	2	Sprocket, 13 Tooth 6 87670 Cap Screw, Hex Head, Grade 5, 1/2" x 1 1/4" 6 84236 Hex Locknut, 1/2"
26	252732	2	Shield Weld Assembly
27	131576	2	Housing, Bearing 2 87569 Lube Fitting, 1/4"-28, 45° 4 88551 Cap Screw, Hex Head, Grade 5, 1/2" x 1 3/4" 4 65319 Plain Washer, Special, Harden 4 80679 Lockwasher, 1/2" 4 84946 Hex Nut, 1/2"
28	131573	2	Ball Bearing
29	131377	2	Collar, Bearing 2 80425 Set Screw, Hex Socket Head, Cup Point, 3/8" x 3/8"
30	144963	1	Sheave 1 87053 Key, Woodruff, #127, 1/4" x 2 1/8" 1 84983 Set Screw, Square Head, Cup Point, 3/8" x 1" 1 84969 Hex Jam Nut, 3/8"

NOTE: The next two items (Part Nos. 256723 and 255536) are applicable to machines built prior to Serial No. 307475 having a major tube diameter of 1 5/16". Whereas machines on and above Serial No. 307475 are 1 5/8" tube diameter. WARNING do not intermix on the same machine.

31 286069	256723	1	Chain Assembly, Upper Conveyor, Complete (Includes Ref. No. 32)
32	255536	AR	Tube and Chain Link Weld Assembly (Repair Section for Ref. No. 31)

NOTE CONTINUED: The next two items (Part Nos. 266224 and 711957) are applicable to machines built between Serial Nos. 307475 and 404872 only.

33 286069	266224**	1	Chain Assembly, Upper Conveyor, Complete (Includes Ref. No. 34)
34	711957	AR	Chain Repair Kit (Includes Ref. No. 38 and (2) Ref. No. 39 and (4 each) of Hardware listed under Ref. No. 38) (Repair Section for Ref. No. 33)
35	265239	AR	Pin, Chain Connector (Includes Cotter Pin) 1 88383 Cotter Pin, Harden, 3/32" x 1/2"

*replaced with (2) 634340
(1) 634334
(2) 616776
AR 84444*

ITEM 35 THRU 39 APPLICABLE ON AND ABOVE SERIAL NO. 404872

36	286069	1	Chain Assembly, Upper Conveyor, Complete (Incl. Ref. Nos. 37 thru 39)
37	273260	1	Chain Assemblies, Matched Set of Side Chains
38 286826	286826	72	Tube Weld Assembly --- <i>Replaces 286826</i> 718276 288 702684 Machine Bolt, Hex Head, Special 84443 288 280147 Hex Locknut, 5/16"
39	576267 634340	AR	Chain Assembly (Repair Segment for Side Chains, includes (one each) Regular, Offset and Attachment Links and a pin part no. 265239) --- <i>Replaces 576267</i>

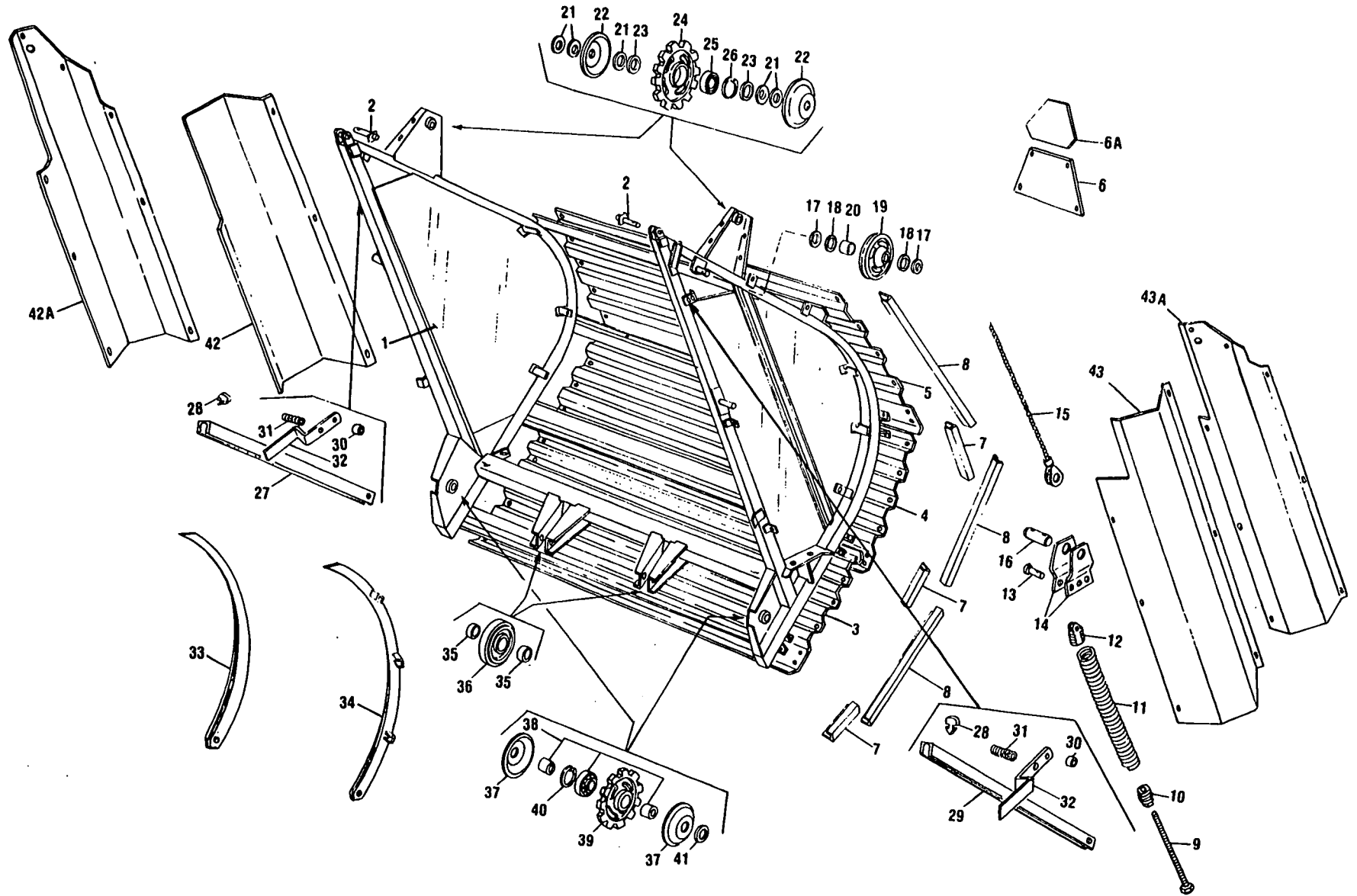
AR - As Required

24 • Follow procedure outlined in the operators manual for removal of damaged tube and installation of the Part No. 711957 Chain Repair Kit.

•• Chain Assembly 266224 will be replaced by 286069 (Ref. No. 36) when inventories of 266224 are depleted.

NOTES

MODEL 850 ROUND BALER
TAILGATE GROUP



MODEL 850 ROUND BALER
TAILGATE GROUP

Ref. No.	Part No.	No. Used	Description
1	257018	1	Frame Weld Assembly, Tailgate
2	257016	2	Pin Weld Assembly 2 80754 Cotter Pin, 3/16" x 1 1/2"
3	246654	1	Shield, Bottom 12 145913 Cap Screw, Hex Head, Serrated, 5/16" x 3/4"
4	709987	1	Shield, Center 12 145913 Cap Screw, Hex Head, Serrated, 5/16" x 3/4"
5	576179	1	Shield, Top 12 145913 Cap Screw, Hex Head, Serrated, 5/16" x 3/4"
6	709979	1	Plate with Decal (Includes Ref. Nos. 7) 4 145913 Cap Screw, Hex Head, Serrated, 5/16" x 3/4"
6A	189369 189396	1	Decal, Slow Moving Vehicle
7	246657	6	Angle 16 145913 Cap Screw, Hex Head, Serrated, 5/16" x 3/4"
8	246656	6	Angle 18 145913 Cap Screw, Hex Head, Serrated, 5/16" x 3/4" 18 145458 Hex Nut, Serrated, 5/16"
9	257460	4	Bolt Weld Assembly 8 87365 Plain Washer, 5/8" 8 84947 Hex Nut, 5/8"
10	185846	4	Spring Nut
11	185848	4	Spring ---Replaces 261100
12	185847	4	Spring Nut
13	63828	4	Clevis Pin 4 87365 Plain Washer, 5/8" 4 87397 Cotter Pin, 3/16" x 1"
14	570971	4	Bracket Weld Assembly ---Replaces 258583
15	283042	2	Cable Assembly 6 87367 Plain Washer, 1" 2 80754 Cotter Pin, 3/16" x 1 1/2"
16	258582	2	Pin 4 80754 Cotter Pin, 3/16" x 1 1/2"
17	87367	4	Plain Washer, 1"
18	26402	4	Plain Washer, Special
19	261615	2	Idler Assembly (Includes (1) Ref. No. 20) 2 87414 Lube Fitting, 1/4"-28, Straight 2 80754 Cotter Pin, 3/16" x 1 1/2"
20	141451	2	Bushing
21	249100	8	Plain Washer, Special
22	245312	4	Shield
23	58792	4	Plain Washer, Special
24	288270 571569	2	Sprocket, Idler, 13 Tooth ---Replaces 236590 and 571569 2 87337 Cap Screw, Hex Head, Grade 5, 3/4" x 3" 2 87340 Lockwasher, 3/4" 2 84948 Hex Nut, 3/4"
25	253624	2	Ball Bearing
26	66967	2	Ring, Retaining
27	706638 706637	1	Lockout Assembly, Right Hand, Tailgate Cylinder (Includes (1) Ref. No. 28) 1 80754 Cotter Pin, 3/16" x 1 1/2"
28	128104	2	Bumper, Rubber
29	706637 706638	1	Lockout Assembly, Left Hand, Tailgate Cylinder (Includes (1) Ref. No. 28) 1 80754 Cotter Pin, 3/16" x 1 1/2"
30	117441	2	Spacer
31	42019	2	Spring

CONTINUE

MODEL 850 ROUND BALER
TAILGATE GROUP (CONTINUED)

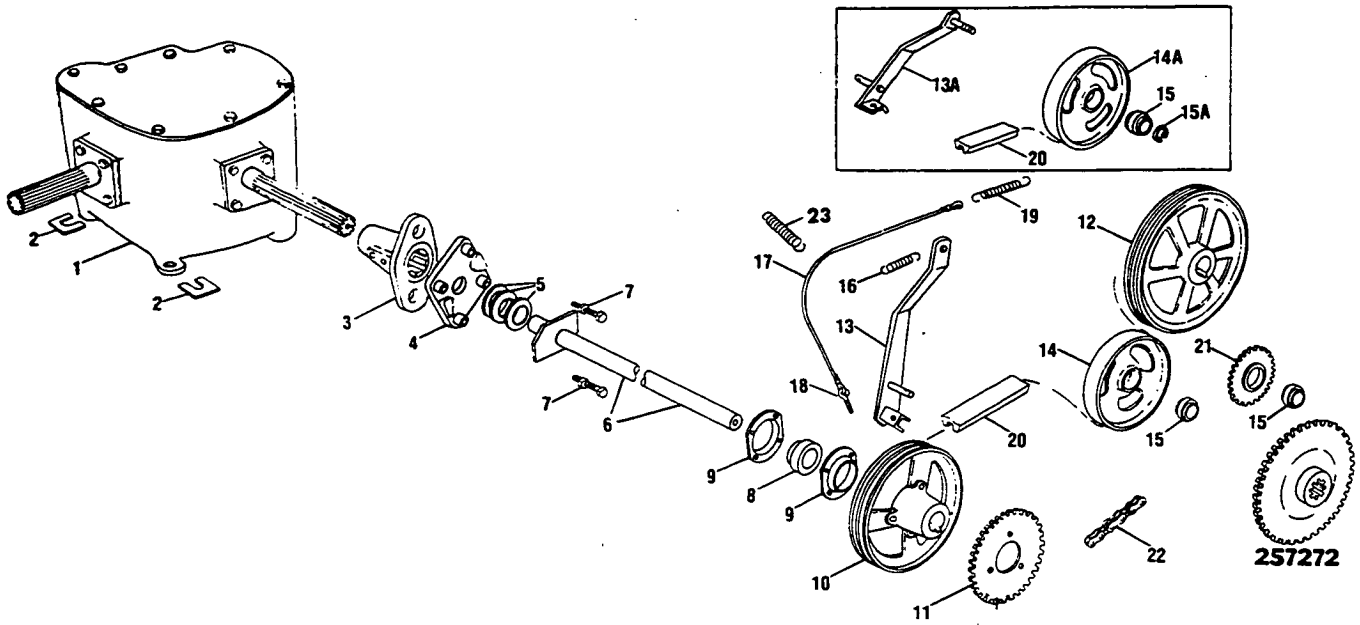
Ref. No.	Part No.	No. Used	Description
32	259161	2	Clip
		2	88011 Cap Screw, Hex Head, Grade 5, 3/8" x 1 1/4"
		2	88310 Cap Screw, Hex Head, Grade 5, 5/16" x 1 3/4"
		4	80702 Plain Washer, 3/8"
		4	80664 Plain Washer, 5/16"
		2	80680 Lockwasher, 3/8"
		2	84944 Hex Nut, 3/8"
		2	87382 Hex Locknut, 5/16"
33	257015	1	Runner Weld Assembly, Right Hand
		4	88011 Cap Screw, Hex Head, Grade 5, 3/8" x 1 1/4"
		8	80702 Plain Washer, 3/8"
		4	84944 Hex Nut, 3/8"
34	257002	1	Runner Weld Assembly, Left Hand
		4	88011 Cap Screw, Hex Head, Grade 5, 3/8" x 1 1/4"
		8	80702 Plain Washer, 3/8"
		4	80680 Lockwasher, 3/8"
		4	84944 Hex Nut, 3/8"
35	38814	4	Spacer
36	266232	2	Idler Assembly
		2	88492 Cap Screw, Hex Head, Grade 5, 5/8" x 3 1/4"
		2	84057 Lockwasher, 5/8"
		2	84947 Hex Nut, 5/8"
37	259925	4	Shield
38	713309	4	Bearing Kit (Includes Ball Bearing and (2) Plain Washers)
39 285273 571571		2	Sprocket, Idler, 13 Tooth ---Replaces 259911 <i>and 268273</i>
		2	88558 Cap Screw, Hex Head, Grade 5, 3/4" x 3 1/2"
		2	87381 Plain Washer, 3/4"
		2	87340 Lockwasher, 3/4"
		2	84948 Hex Nut, 3/4"
40	268118	2	Ring, Retaining
41	26260	2	Plain Washer, Special
42	259277*	1	Shield, Right Hand
		3	88542 Cap Screw, Hex Head, Grade 5, 1/4" x 1/2"
		3	87667 Machine Screw, Hex Head, Self-Tapping, 1/4" x 1/2"
		6	80701 Plain Washer, 1/4"
		3	80682 Lockwasher, 1/4"
42A	706078**	1	Shield, Right Hand
		5	88542 Cap Screw, Hex Head, Grade 5, 1/4" x 1/2"
		3	87667 Machine Screw, Hex Head, Self-Tapping, 1/4" x 1/2"
		8	80701 Plain Washer, 1/4"
		5	80682 Lockwasher, 1/4"
43	258604*	1	Shield, Left Hand
		3	88542 Cap Screw, Hex Head, Grade 5, 1/4" x 1/2"
		3	87667 Machine Screw, Hex Head, Self-Tapping, 1/4" x 1/2"
		6	80701 Plain Washer, 1/4"
		3	80682 Lockwasher, 1/4"
43A	706079**	1	Shield, Left Hand
		5	88542 Cap Screw, Hex Head, Grade 5, 1/4" x 1/2"
		3	87667 Machine Screw, Hex Head, Self-Tapping, 1/4" x 1/2"
		8	80701 Plain Washer, 1/4"
		5	80682 Lockwasher, 1/4"

* Used on and below Serial No. 424810

** Used on and above Serial No. 424811

NOTES

MODEL 850 ROUND BALER
DRIVE ASSEMBLY



Ref. No.	Part No.	No. Used	Description
1	261010 706805	1	Gearbox Assembly --- Replaces 261010 (See Page 32 and 33 for Component Breakdown)
			3 88551 Cap Screw, Hex Head, Grade 5, 1/2" x 1 3/4"
			3 80679 Lockwasher, 1/2"
			3 84946 Hex Nut, 1/2"
2	163962	AR	Shim, Gearbox Mounting
3	259655 705784	1	Hub Assembly --- Replaces 259655
			1 87414 Lube Fitting, 1/4"-28, Straight
			1 80465 Set Screw, Square Head, Cup Point, 7/16" x 1 1/4"
			1 87017 Hex Jam Nut, 7/16"
4	259656	1	Shear Plate Weld Assembly
5	28691	3	Plain Washer, Special
6	259658*	1	Shaft Weld Assembly
	704591**	1	Shaft Weld Assembly
7	58118	2	Shear Bolt with Locknut, #12
8	605032	1	Ball Bearing and Collar
9	52481	2	Flangette 7670 Cap Screw, Hex Head
			4 87868 Carriage Bolt, Grade 5, 1/2" x 1 1/4"
			4 87364 Plain Washer, 1/2"
			4 80679 Lockwasher, 1/2"
			4 84946 Hex Nut, 1/2"
10	245948*	1	Sheave
			1 87532 Set Screw, Hex Head, Cup Point, 3/8" x 1 1/4"
			1 84969 Hex Jam Nut, 3/8"
	704554**	1	Sheave
			1 196703 Plain Washer, Special
			1 87389 Cap Screw, Hex Head, Grade 5, 5/8" x 1 1/4"
11	257270	1	Sprocket, 24 Tooth 23 TOOTH SPKT.
			3 88011 Cap Screw, Hex Head, Grade 5, 3/8" x 1 1/4"
			3 80680 Lockwasher, 3/8"

30 * Used on and below Serial No. 434931
** Used on and above Serial No. 434932

CONTINUE

MODEL 850 ROUND BALER

DRIVE ASSEMBLY (CONTINUED)

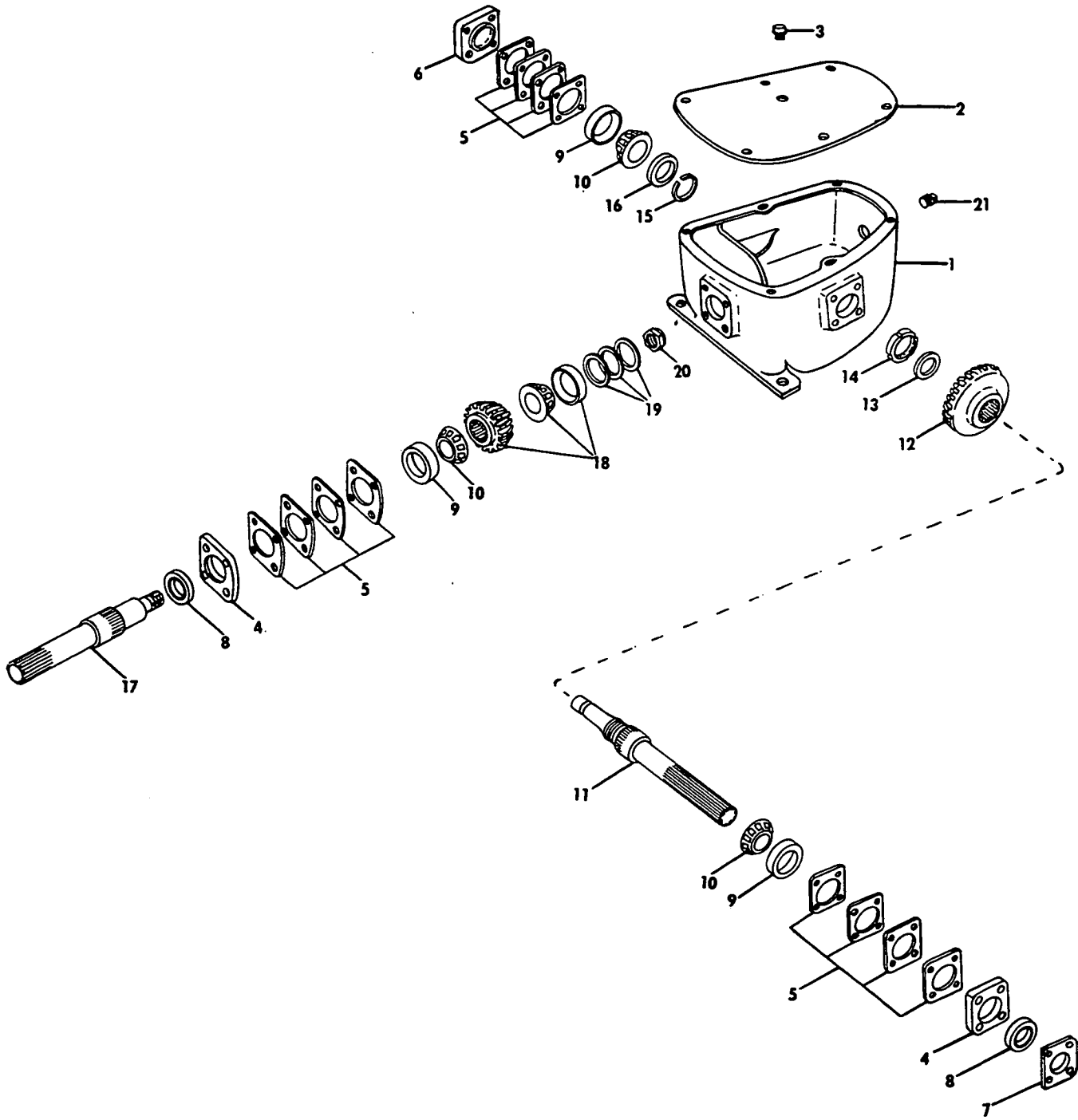
Ref. No.	Part No.	No. Used	Description
12	144963	1	Sheave 1 87053 Woodruff Key, #127, 1/4" x 2 1/8" 1 84983 Set Screw, Square Head, Cup Point, 3/8" x 1" 1 84969 Hex Jam Nut, 3/8"
13	264616+	1	Bracket Weld Assembly, Idler 1 87381 Plain Washer, 3/4" 1 87397 Cotter Pin, 3/16" x 1"
13A	571295++	1	Bracket Weld Assembly, Idler 1 87381 Plain Washer, 3/4" 1 87397 Cotter Pin, 3/16" x 1"
14	66460+	1	Idler Assembly (Includes (1) Ref. No. 15) <i>(Refer to Page 9, Fig #1B)</i> 1 88494 Cap Screw, Hex Head, Grade 5, 5/8" x 1 3/4" 1 84057 Lockwasher, 5/8" 1 84947 Hex Nut, 5/8"
14A	702516++	1	Idler Assembly (Includes (1) Ref. No. 15 & 15A) 1 84057 Lockwasher, 5/8" 1 84947 Hex Nut, 5/8"
15	66553	2	Ball Bearing
15A	12084++	1	Ring, Retaining
16	00016	1	Spring 1 80755 Cotter Pin, 1/4" x 1"
17	257195	1	Cable Assembly (Includes Ref. No. 18)
18	144403	1	Eyebolt 2 84943 Hex Nut, 5/16"
19	32308	1	Spring
20	229760	1	"V" Belt
21	66614	1	Idler Assembly (Includes (1) Ref. No. 15) 1 87630 Cap Screw, Hex Head, Grade 5, 5/8" x 2 1/2" AR 87365 Plain Washer, 5/8" 1 84057 Lockwasher, 5/8" 1 84947 Hex Nut, 5/8"
22	257312	1	Chain Assembly, Lower Apron, RC 80, 89 Pitches AR 140774 Link, Regular Roller AR 140775 Link, Offset AR 140776 Link, Coupler
23	00015	1	Spring

AR - As Required

+ Used on and below Serial No. 404871

++ Used on and above Serial No. 404872

MODEL 850 ROUND BALER
~~USED ON AND BELOW SERIAL NO. 12493~~ ORIGINAL
GEARBOX ASSEMBLY

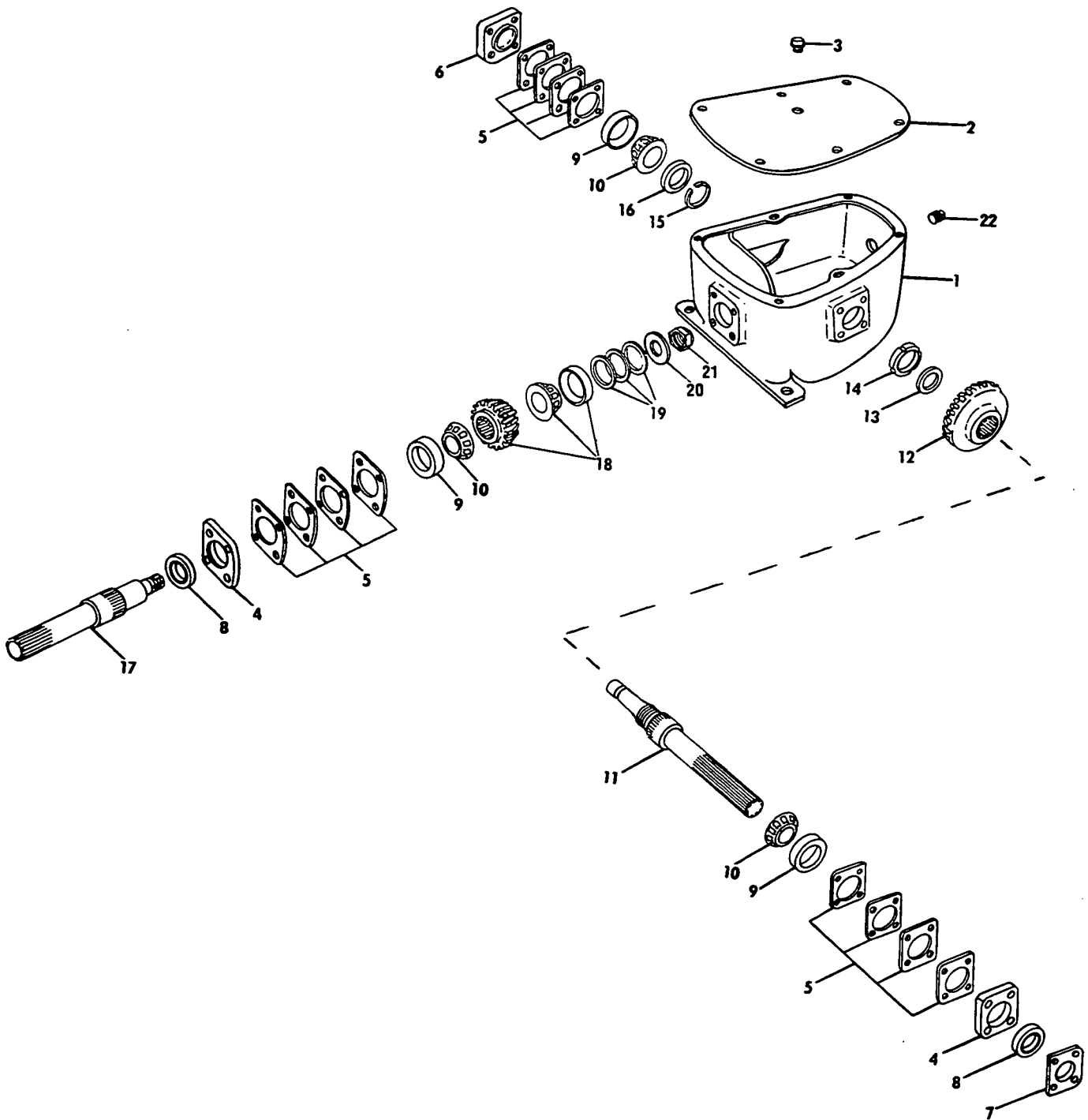


MODEL 850 ROUND BALER
~~USED ON AND BELOW SERIAL NO. 434931~~ *Original*
 GEARBOX ASSEMBLY

Ref. No.	Part No.	No. Used	Description
	261016		GEARBOX ASSEMBLY, 540 R.P.M.
1	122264	1	Housing, Gearbox
2	122281	1	Cover
		6	88434 Cap Screw, Hex Head, Grade 5, 3/8" x 3/4"
		2	285072 Plain Washer, Special
		2	80702 Plain Washer, 3/8"
		6	80680 Lockwasher, 3/8"
3	39853	1	Vent, Air
4	122268	2	Retainer
		8	88206 Cap Screw, Hex Head, Grade 5, 3/8" x 1"
		8	80680 Lockwasher, 3/8"
5	122274	AR	Shim, .003"
	122275	AR	Shim, .005"
	122276	AR	Shim, .007"
	122277	AR	Shim, .020"
6	126005	1	Retainer
		4	88206 Cap Screw, Hex Head, Grade 5, 3/8" x 1"
		4	80680 Lockwasher, 3/8"
7	283489	1	Plate
8	28246	2	Oil Seal
9	48976	3	Cup, Tapered Roller Bearing
10	48977	3	Cone, Tapered Roller Bearing
11	602451 265415	1	Shaft, Output --- <i>Replaces 265415</i>
12	57262 126004	1	Gear, Bevel, 36 Tooth
13	<i>and</i> 126002	1	Washer
14	<i>717313</i> 126003	1	Stake Nut
15	46810	1	Retaining Ring
16	122280	1	Washer
17	259977	1	Shaft, Input
18	<i>717313</i> 708342	1	Pinion Service Kit (Includes Pinion, Bearing Cone and Cup)
19	<i>572621</i> 122271	AR	Shim, .003"
	122272	AR	Shim, .005"
	122273	AR	Shim, .007"
20	122278	1	Hex Nut, Special
21	80815	1	Pipe Plug, 3/4"

AR - As Required

MODEL 850 ROUND BALER
~~USED ON AND ABOVE SERIAL NO. 434782~~ Replacement
GEARBOX ASSEMBLY

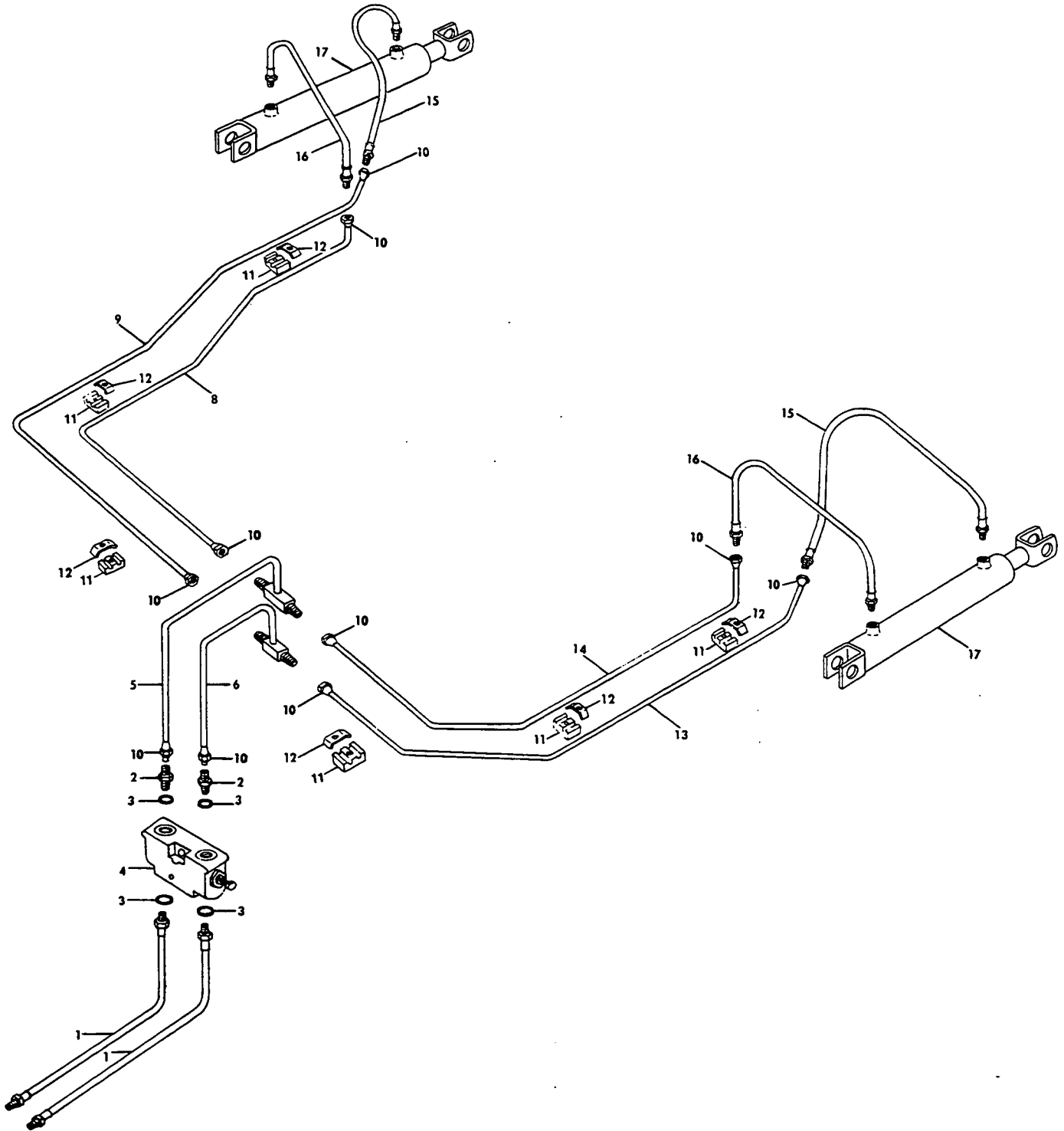


MODEL 850 ROUND BALER
~~USED ON AND ABOVE SERIAL NO. 434932~~ *Replacement*
 GEARBOX ASSEMBLY

Ref. No.	Part No.	No. Used	Description
	706805		GEARBOX ASSEMBLY, 540 R.P.M.
1	577163	1	Housing, Gearbox
2	122281	1	Cover
		6	88434 Cap Screw, Hex Head, Grade 5, 3/8" x 3/4"
		2	285072 Plain Washer, Special
		2	80702 Plain Washer, 3/8"
		6	80680 Lockwasher, 3/8"
3	39853	1	Vent, Air
4	122268	2	Retainer
		8	88206 Cap Screw, Hex Head, Grade 5, 3/8" x 1"
		8	80680 Lockwasher, 3/8"
5	122274	AR	Shim, .003"
	122275	AR	Shim, .005"
	122276	AR	Shim, .007"
	122277	AR	Shim, .020"
6	126005	1	Retainer
		4	88206 Cap Screw, Hex Head, Grade 5, 3/8" x 1"
		4	80680 Lockwasher, 3/8"
7	283489	1	Plate
8	28246	2	Oil Seal
9	48976	3	Cup, Tapered Roller Bearing
10	48977	3	Cone, Tapered Roller Bearing
11	602451 265415	1	Shaft, Output -- <i>Replaces 265415</i>
12	572621	1	Gear, Bevel, 36 Tooth
13	126002	1	Washer
14	126003	1	Stake Nut
15	46810	1	Retaining Ring
16	122280	1	Washer
17	577167	1	Shaft, Input
18	717313	1	Pinion Service Kit (Includes Pinion, Bearing Cone, Cup and Washer)
19	122271	AR	Shim, .003"
	122272	AR	Shim, .005"
	122273	AR	Shim, .007"
20	577165	1	Plain Washer, Special
21	122278	1	Hex Nut, Special
22	80815	1	Pipe Plug, 3/4"

AR - As Required

MODEL 850 ROUND BALER
HYDRAULIC SYSTEM



MODEL 850 ROUND BALER
HYDRAULIC SYSTEM

Ref. No.	Part No.	No. Used	Description
1	259245*	2	Hose Assembly, 3/8" x 84" (Includes Ref. No. 3)
2	128817	AR	Connector, Reducer, 3/4"-16 to 9/16"-18 Flared (Includes Ref. No. 3)
3	128825	AR	"O" Ring
4	576447	1	Valve Assembly Lock-out ---Replaces 283579 (See Page 39 for Component Breakdown)
			1 88780 Cap Screw, Hex Head, Grade 5, 5/16" x 2 1/4"
			1 88275 Cap Screw, Hex Head, Grade 5, 5/16" x 1 1/2"
			2 80681 Lockwasher, 5/16"
5	288692**	1	Tube Assembly, Right Hand (Includes (1) Ref. No. 10)
6	288693**	1	Tube Assembly, Left Hand (Includes (1) Ref. No. 10)
7	76355**	AR	Tee Union, 9/16"-18
8	N.S.	1	Tube Assembly, 3/8" (Includes (2) Ref. No. 10)
9	N.S.	1	Tube Assembly, 3/8" (Includes (2) Ref. No. 10)
10	76346	10	Tube Nut, 3/8"
11	252309	6	Clamp
12	139393	6	Clip, Tube Retaining
			6 80682 Lockwasher, 1/4"
			6 84942 Hex Nut, 1/4"
13	N.S.	1	Tube Assembly, 3/8" (Includes (2) Ref. No. 10)
14	N.S.	1	Tube Assembly, 3/8" (Includes (2) Ref. No. 10)
15	247710	2	Hose Assembly, 3/8" x 25"
16	707803	2	Hose Assembly, 3/8" x 17"
17	528551	2	Cylinder Assembly ---Replaces 524089 (See Page 41 for Component Breakdown)
			8 87367 Plain Washer, 1"
			2 80754 Cotter Pin, 3/16" x 1 1/2"

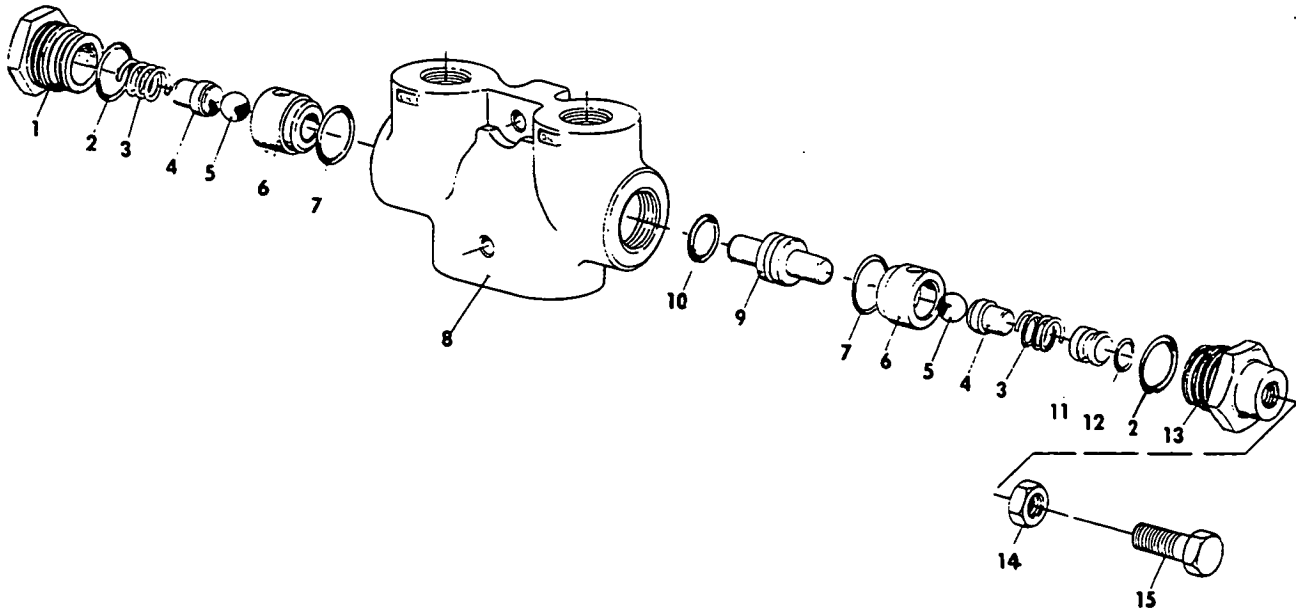
N.S. - Not Serviced, use hydraulic tubing repair sections. Refer to Standard Parts Catalog for part numbers and instructions.

* Redesign hose assembly Part No. 259245 will have male fittings at each end, this will permit attaching directly into the valve instead of using Connector Part No. 128817 as reflected on illustration.

** Redesign Tube Assemblies Part Nos. 288692 and 288693 have the Tee Fitting attached to the Tube Assemblies, therefore Tee Union Part No. 76355 is not needed when using the above mentioned Tube Assemblies.

AR - As Required

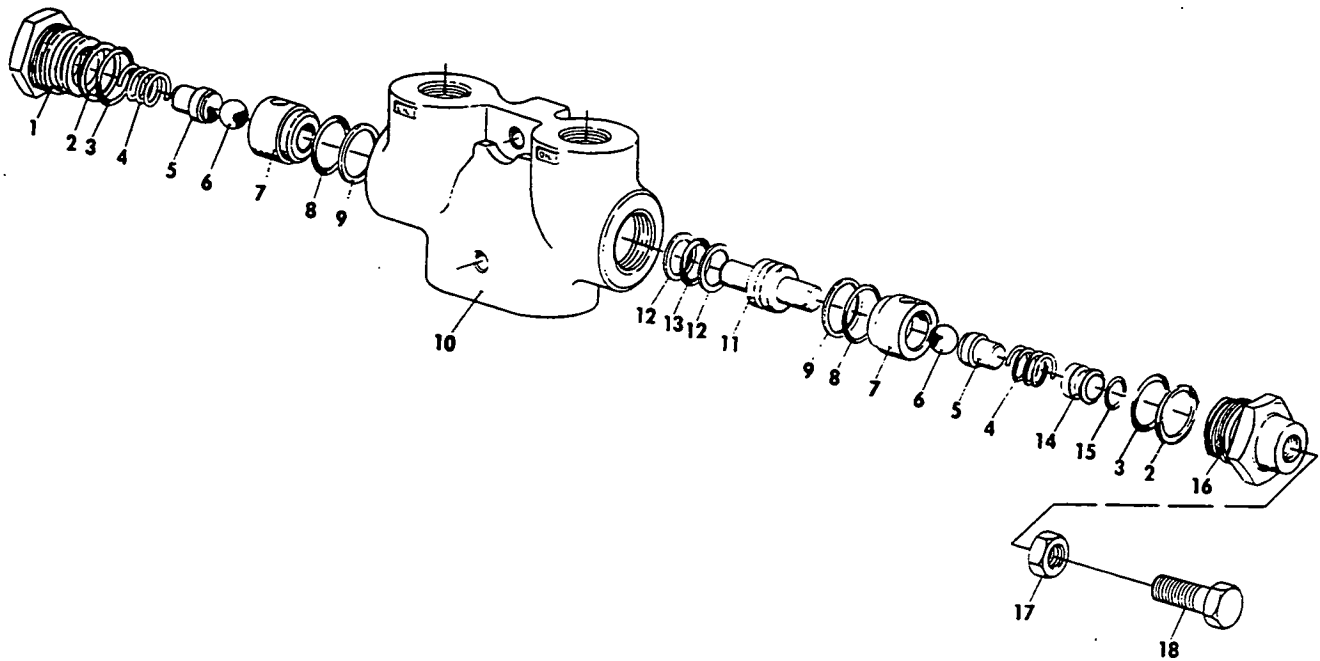
MODEL 850 ROUND BALER
(USED ON AND BELOW SERIAL NO. 371542)
VALVE ASSEMBLY



Ref. No.	Part No.	No. Used	Description
	283579		VALVE ASSEMBLY, COMPLETE
1	N.S.S.	1	Cap End
2	235758	2	"O" Ring
3	272751	2	Spring
4	272748	2	Guide, Ball
5	272749	2	Ball
6	N.S.S.	2	Housing, Check
7	273231	2	"O" Ring
8	N.S.S.	1	Housing, Valve
9	N.S.S.	1	Piston
10	272220	1	"O" Ring, Piston
11	272753	1	Plunger
12	236535	1	"O" Ring, Cap
13	N.S.S.	1	Cap, End
14	87656	1	Hex Nut, Jam, 7/16", N.F.
15	88160	1	Cap Screw, Hex Head, Grade 5, 7/16" x 1", N.F.

N.S.S. - Not Serviced Separately, order new Valve Assembly Part No. 576447.

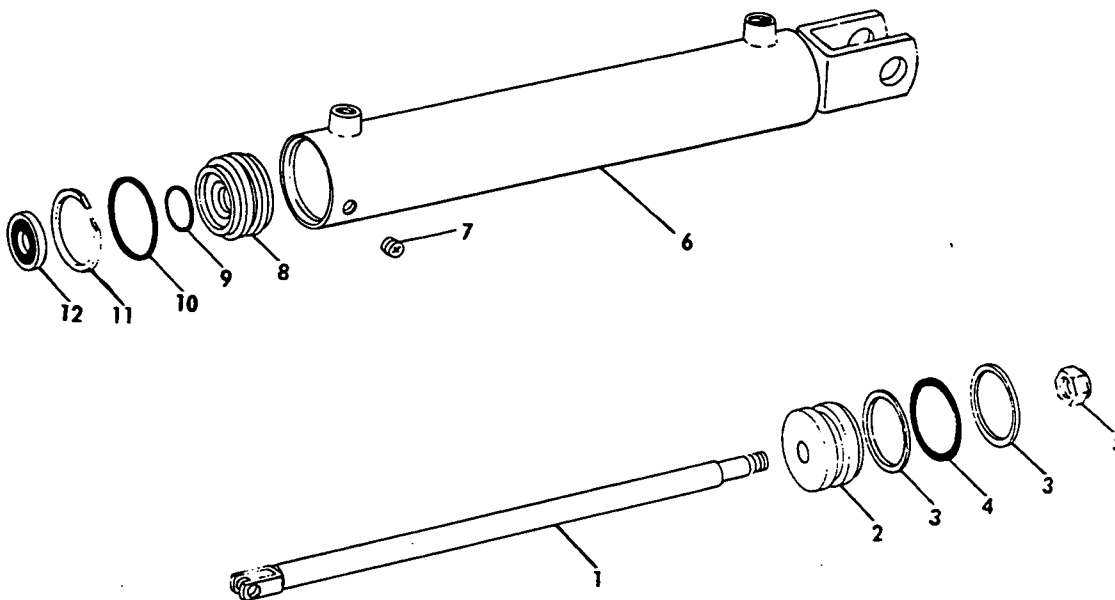
MODEL 850 ROUND BALER
(USED ON AND ABOVE SERIAL NO. 371543)
VALVE ASSEMBLY



Ref. No.	Part No.	No. Used	Description
	576447		VALVE ASSEMBLY, COMPLETE
1	273244	1	Cap, End
2	217114	2	Washer, Back-up
3	164380	2	"O" Ring
4	272751	2	Spring
5	272748	2	Guide, Ball
6	272749	2	Ball
7	273241	2	Housing, Check
8	104362 273231	2	"O" Ring
9	273245	2	Washer, Back-up
10	N.S.S.	1	Housing Valve
11	273243	1	Piston
12	129982	2	Washer, Back-up
13	129979	1	"O" Ring
14	272753	1	Plunger
15	236535	1	"O" Ring
16	273242	1	Cap, End
17	87308 87656	1	Hex Nut, Jam, $\frac{3}{8}$ $\frac{7}{16}$, N.F. $\frac{3}{8}$
18	88374 88160	1	Cap Screw, Hex Head, Grade 5, $\frac{7}{16}$ x 1", N.F.

N.S.S. - Not Serviced Separately

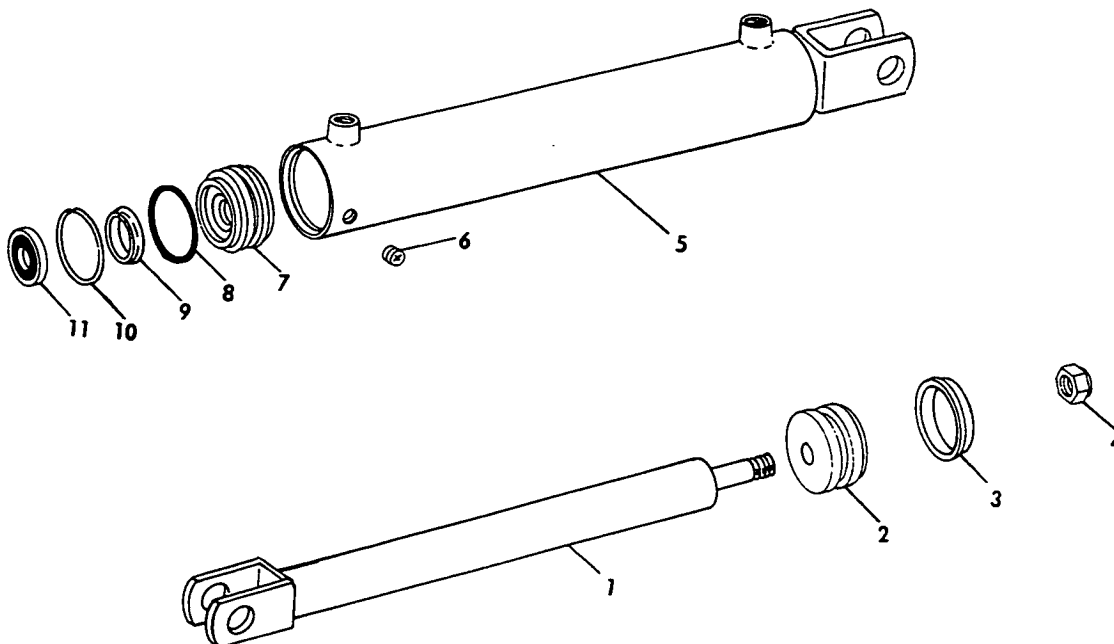
MODEL 850 ROUND BALER
(USED ON AND BELOW SERIAL NO. 372089)
CYLINDER ASSEMBLY



Ref. No.	Part No.	No. Used	Description
	524089		CYLINDER ASSEMBLY, COMPLETE (Includes Ref. Nos. 1 thru 12)
1	523227	1	Rod Weld Assembly
2	511953	1	Piston
3	235783	2	Washer, Back-up
4	235759	1	"O" Ring
5	88095	1	Hex Locknut, 3/4", N.F.
6	524088	1	Barrel Weld Assembly
7	80430	1	Set Screw, Hex Socket Head, Cup Point, 1/4" x 1/4"
8	523228	1	Head
9	33323	1	"O" Ring
10	235782	1	"O" Ring
11	512016	1	Retaining Ring
12	529340	1	Oil Seal

The performance of the present 524089 Cylinder Assembly may be improved by replacing "O" Ring Part No. 33323 with Oil Seal Part No. 528549 and by replacing the two Back-up Washers Part No. 235783 and the one "O" Ring 235759 with single Oil Seal Part No. 528550 as reflected on the above illustration. When this is accomplished, then consider your Cylinder Assembly as Part No. 528551 for future references.

MODEL 850 ROUND BALER
 (USED ON AND ABOVE SERIAL NO. 372090)
 CYLINDER ASSEMBLY



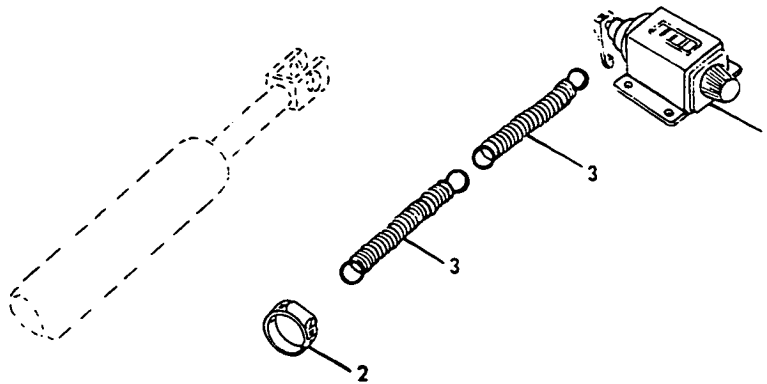
Ref. No.	Part No.	No. Used	Description
	528551		CYLINDER ASSEMBLY, COMPLETE (Includes Ref. Nos. 1 thru 11)
1	523227	1	Rod Weld Assembly
2	511953 N.S.S	1	Piston
3	528550	1	Oil Seal
4	88095	1	Hex Locknut, 3/4", N.F.
5	524088	1	Barrel Weld Assembly
6	529034	1	Set Screw, Hex Socket Head, Self-Locking, Cup Point, 1/4" x 1/4"
7	523228	1	Head
8	235782	1	"O" Ring
9	528549	1	Oil Seal
10	512016	1	Retaining Ring
11	529340	1	Oil Seal

~~591299~~
 593803

Seal Kit (Includes ² 3, 8 thru 11)

N.S.S. Not Serviced Separately, Serviced in Kit 593803

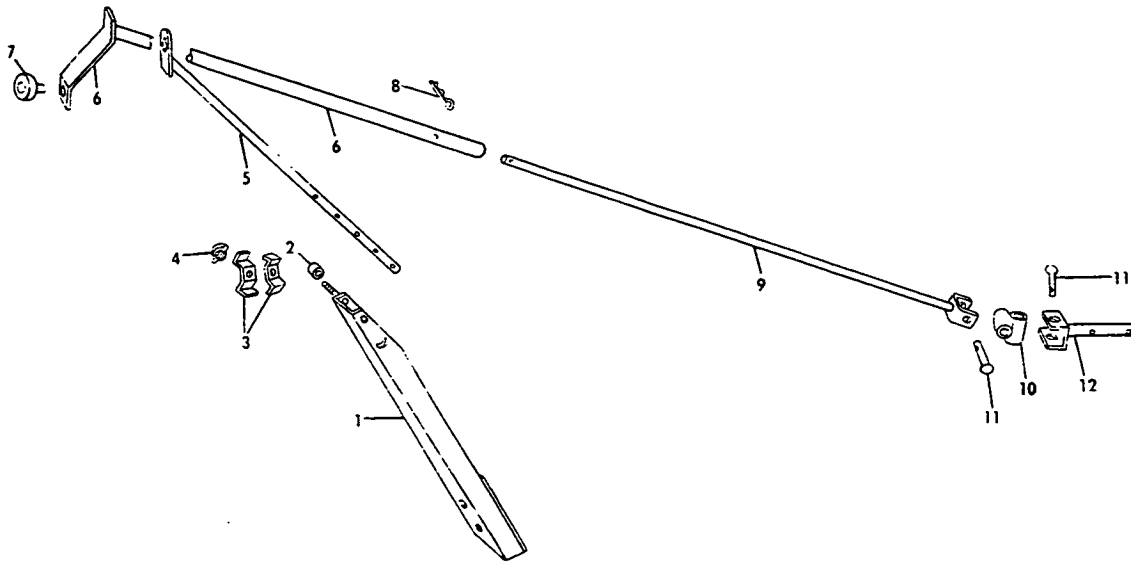
MODEL 850 ROUND BALER
 BALE COUNTER BUNDLE



Ref. No.	Part No.	No. Used	Description
1	203255 26995	1	BALE COUNTER BUNDLE Counter Assembly, Four Figure (Includes Mounting Hardware) 1 70047 Lever with Clamp Screw 1 70643 Knob, Reset with Set Screw
2	58880	1	Clamp
3	197717	2	Spring 1 80756 Cotter Pin, 1/8" x 3/4"
			BALE SIZE KIT
	712886	AR	Indicator, Bale Size (Not Illustrated) (Used on and below Serial No. 404872)

MODEL 850 ROUND BALER

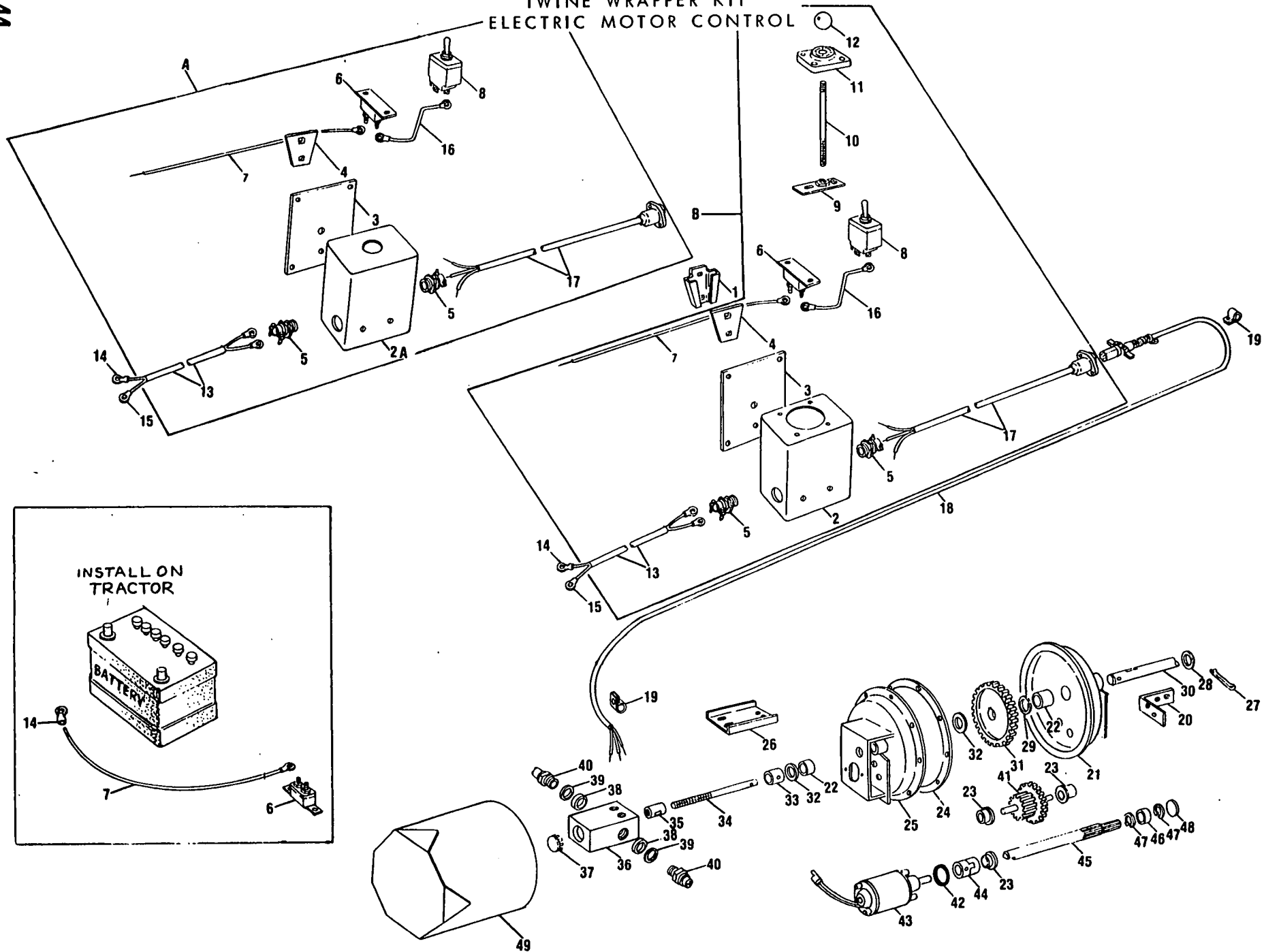
TWINE WRAPPER KIT
MANUAL CONTROL



Ref. No.	Part No.	No. Used	Description
1	257171	1	Channel Weld Assembly 2 88456 Cap Screw, Hex Head, Grade 5, 3/8" x 3 3/4" 2 80702 Plain Washer, 3/8" 2 80680 Lockwasher, 3/8" 2 84944 Hex Nut, 3/8"
2	516914	1	Bushing
3	42365	2	Clamp
4	80840	1	Wing Nut, 3/8"
5	259256	1	Pipe Weld Assembly 2 88546 Cap Screw, Hex Head, Grade 5, 3/8" x 2 1/4" 2 80702 Plain Washer 3/8" 2 88902 Hex Locknut, 3/8"
6	283033	1	Arm Weld Assembly, Control
7	33781	1	Knob 1 87936 Cap Screw, Hex Head, Grade 5, 3/8" x 2 1/2" 1 87016 Plain Washer, 3/8" 1 84944 Hex Nut, 3/8"
8	37851	1	Hairpin Cotter
9	283032	1	Yoke Weld Assembly
10	35717	1	Block, Universal 1 87414 Lube Fitting, 1/4"-28, Straight
11	15081	2	Rivet, Drilled 2 80702 Plain Washer, 3/8" 2 80756 Cotter Pin, 1/8" x 3/4"
12	254920	1	Yoke Weld Assembly 1 80299 Plain Washer, 5/8" 1 80755 Cotter Pin, 1/8" x 1"

Reference No. 1, early model machines had a cap screw 3/8" x 1 3/4" welded to the top edge to hold the hose clamps, on later models the hose clamps were moved to the top of the Power Take-Off Shield, so the cap screw was eliminated from Part No. 257171. Therefore owners of early machines may have to relocate hose clamps, when replacing Reference No. 1 without welded cap screw. Reference Nos. 2 thru 4 not used at this location above Serial No. 363542.

MODEL 850 ROUND BALER
 TWINE WRAPPER KIT
 ELECTRIC MOTOR CONTROL



MODEL 850 ROUND BALER
TWINE WRAPPER KIT
ELECTRIC MOTOR CONTROL

Ref. No.	Part No.	No. Used	Description
A	572041		CONTROL BOX KIT (Includes (1) each Ref. Nos. 2A, 3, 4, 6, 8, 13, 16, 17 and (2) Ref. No. 5) ---Replaces 285837
B	285837		CONTROL BOX KIT (Includes (1) each Ref. Nos. 2 thru 4, 6, 8 thru 13, 16, 17 and (2) of Ref. No. 5)
1	38027*	1	Socket 2 88059 Machine Bolt, Round Head, Short Square Neck, 5/16" x 1" 2 80681 Lockwasher, 5/16" 2 84943 Hex Nut, 5/16"
2	285353+	1	Box Weld Assembly
2A	712745++	1	Box Weld Assembly
3	285444	1	Back, Sheet 4 87667 Machine Screw, Self-Tapping, Hex Head, 1/4" x 1/2"
4	222782	1	Bracket 2 88489 Carriage Bolt, Grade 5, 5/16" x 1" 4 80664 Plain Washer, 5/16" 2 80681 Lockwasher, 5/16" 2 84943 Hex Nut, 5/16"
5	100381	2	Connector, Electrical Cable
6	131376	2	Circuit Breaker 4 84821 Machine Screw, Truss Head, #10-24 x 1/2" 4 80684 Lockwasher, #10 4 87304 Hex Nut, #10-24
7	571844*	1	Wiring Assembly, 12 Gauge, 6' Length, Single Wire with one #10 Ring Terminal, Circuit Breaker to Battery
8	222437+	1	Switch, Toggle
	578471++	1	Switch, Toggle
9	222794	1	Plate Weld Assembly 2 84969 Hex Jam Nut, 3/8"
10	222783	1	Rod 2 84969 Hex Jam Nut, 3/8"
11	222436	1	Mounting 4 84821 Machine Screw, Truss Head, #10-24 x 1/2" 4 80684 Lockwasher, #10 4 87304 Hex Nut, #10-24
12	168982	1	Knob
13	285442	1	Wiring Assembly, 12 Gauge, 112" Length, Double Wire with one each #6 and #10 Ring Terminals, Battery to Circuit Breaker and Ground to Switch
14	59273*	2	Terminal, Electrical, Ring for 3/8" Stud
	167169*	-2	Terminal, Electrical, Ring for 1/2" Stud
15	46432*	2	Terminal, Electrical, Ring for #10 Stud
16	286632 MAKE locally	1	Wiring Assembly, 12 Gauge, 4" Length, Single Wire with one each #6 and #10 Ring Terminals, Circuit Breaker to Switch
17	711359	1	Wiring Harness Assembly ---Replaces 286633
18	711360	1	Wiring Harness Assembly ---Replaces 285358
19	237980	2	Clip, Cable Retaining 1 88542 Cap Screw, Hex Head, Grade 5, 1/4" x 1/2" 1 80701 Plain Washer, 1/4" 1 80682 Lockwasher, 1/4" 1 84942 Hex Nut, 1/4"

* Not included in Control Box Kit Part No. 285837 or 572041

+ Used on and below Serial No. 434931

++ Used on and above Serial No. 434932

CONTINUE

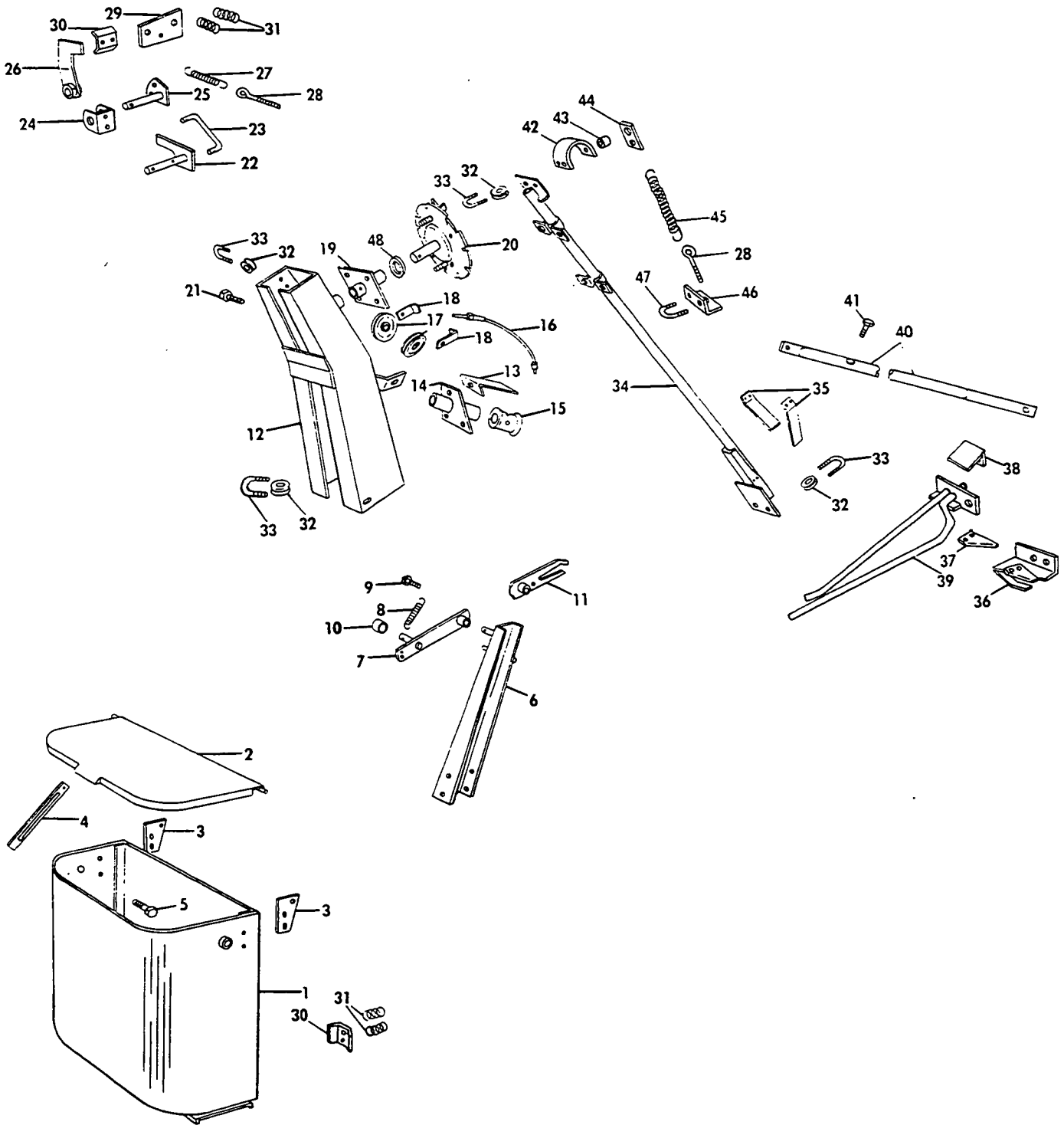
MODEL 850 ROUND BALER
TWINE WRAPPER KIT
ELECTRIC MOTOR CONTROL

Ref. No.	Part No.	No. Used	Description
20	284448	1	Mount 2 88206 Cap Screw, Hex Head, Grade 5, 3/8" x 1" 2 80702 Plain Washer, 3/8" 2 80680 Lockwasher, 3/8" 2 84944 Hex Nut, 3/8"
21	225180	1	Shield Weld Assembly (Includes (1 each) Ref. Nos. 22 and 23) 2 88574 Cap Screw, Hex Head, Grade 5, 5/16" x 1/2" 2 80681 Lockwasher, 5/16"
22	66812	2	Bushing
23	133246	3	Bushing
24	225183	AR	Shim
25	287101	1	Shield Weld Assembly (Includes (1) Ref. No. 22 and (2) Ref. No. 23) 5 88165 Cap Screw, Hex Head, Grade 5, 1/4" x 5/8" 5 80682 Lockwasher, 1/4" 5 84942 Hex Nut, 1/4"
26	286256	1	Channel 2 87872 Cap Screw, Hex Head, Grade 5, 5/16" x 3/4" 2 80664 Plain Washer, 5/16" 2 80681 Lockwasher, 5/16" 2 84943 Hex Nut, 5/16"
27	87397	1	Cotter Pin, 3/16" x 1"
28	26260	AR	Plain Washer, Special
29	45960	1	Plain Washer, Special
30	284449	1	Shaft
31	224894	1	Gear, 72 Tooth 1 80810 Key, Woodruff, #9, 3/16" x 3/4"
32	29534	1	Plain Washer, Special
33	285263	1	Connector 1 88452 Pin, Grooved, Type "E", 3/16" x 1 1/4"
34	285273	1	Shaft 1 88452 Pin, Grooved, Type "E", 3/16" x 1 1/4"
35	285264	1	Actuator, Switch 1 80810 Key, Woodruff, #9, 3/16" x 3/4"
36	285265	1	Block 2 88574 Cap Screw, Hex Head, Grade 5, 5/16" x 1/2" 2 80681 Lockwasher, 5/16"
37	88223	1	Button Plug
38	512116	2	Spacer
39	195903	AR	Shim
40	237296	2	Limit Switch
41	238943	1	Gear Assembly
42	241104	1	"O" Ring
43	224895	1	Motor Assembly
44	228661	1	Coupling, Flexible 2 84171 Set Screw, Hex Socket Head, Cup Point, 1/4" x 3/4" 2 87305 Hex Jam Nut, 1/4"
45	228519	1	Gear, 10 Tooth
46	228662	1	Ball Bearing
47	49894	2	Snap Ring
48	229101	1	Expansion Plug
49	285961	1	Shield Weld Assembly 3 88146 Cap Screw, Hex Head, Grade 5, 1/4" x 1" 3 80682 Lockwasher, 1/4"

AR - As Required

NOTES

MODEL 850 ROUND BALER
 USED ON AND BELOW SERIAL NO. 434931
 TWINE WRAPPER KIT



MODEL 850 ROUND BALER
USED ON AND BELOW SERIAL NO. 434931
TWINE WRAPPER KIT

Ref. No.	Part No.	No. Man.	Used Elec.	Description
1	247221	1	1	Box Weld Assembly, Twine AR 84896 Machine Screw, Truss Head, 5/16" x 3/4" AR 80681 Lockwasher, 5/16" AR 84943 Hex Nut, 5/16"
2	254213	1	1	Lid Weld Assembly, Twine Box
3	254215	2	2	Plate 4 88146 Cap Screw, Hex Head, Grade 5, 1/4" x 1" 4 80701 Plain Washer, 1/4" 4 80682 Lockwasher, 1/4" 4 84942 Hex Nut, 1/4"
4	229241	1	1	Latch 1 87872 Cap Screw, Hex Head, Grade 5, 5/16" x 3/4" 1 87382 Hex Locknut, 5/16"
5	88543	1	1	Cap Screw, Hex Head, Grade 5, 5/16" x 1" 2 84968 Hex Jam Nut, 5/16" 1 87382 Hex Locknut, 5/16"
6	254216	1		Channel Weld Assembly 4 88206 Cap Screw, Hex Head, Grade 5, 3/8" x 1" 6 80702 Plain Washer, 3/8" 4 80680 Lockwasher, 3/8" 4 84944 Hex Nut, 3/8"
7	254224	1		Latch Plate Weld Assembly 1 80664 Plain Washer, 5/16" 1 80756 Cotter Pin, 1/8" x 3/4"
8	38669	1		Spring
9	88544	1		Cap Screw, Hex Head, Grade 5, 5/16" x 2" 2 84943 Hex Nut, 5/16"
10	516914	1		Bushing
11	254226	1		Lever Weld Assembly 1 87414 Lube Fitting, 1/4"-28, Straight 1 80299 Plain Washer, 5/8" 1 80755 Cotter Pin, 1/8" x 1"
12	254197	1	1	Frame Weld Assembly 2 88206 Cap Screw, Hex Head, Grade 5, 3/8" x 1" 2 88434 Cap Screw, Hex Head, Grade 5, 3/8" x 3/4" 2 80702 Plain Washer, 3/8" 4 80680 Lockwasher, 3/8" 4 84944 Hex Nut, 3/8"
13	261058	1	1	Shield
14	254179	1	1	Support Weld Assembly 1 87414 Lube Fitting, 1/4"-28, Straight 3 87872 Cap Screw, Hex Head, Grade 5, 5/16" x 3/4" 3 80681 Lockwasher, 5/16" 3 84943 Hex Nut, 5/16"
15	261061	1		Drum, Cable 1 88452 Pin, Grooved, 3/16" x 1 1/4"
	288505		1	Drum, Cable 1 572364 Pin, Grooved, Type "E". 3/16" x 7/8"
16	261868	1		Cable Assembly 1 84949 Hex Nut, 1/4", N.F. 1 88098 Hex Jam Nut, 1/4", N.F.
	570503		1	Cable Assembly 1 84949 Hex Nut 1/4", N.F. 1 88098 Hex Jam Nut, 1/4", N.F.

CONTINUE

MODEL 850 MANURE SPREADER
 USED ON AND BELOW SERIAL NO. 434931
 TWINE WRAPPER KIT (CONTINUED)

Ref. No.	Part No.	No. Used	Description
		Man Elec	
17	697870 + 1419 48718	2	79 SPACER Sheave
18	47306	2	Guard, Sheave 2 88044 Cap Screw, Hex Head, Grade 5, 3/8" x 1 1/2" 2 80702 Plain Washer, 3/8" 2 80680 Lockwasher, 3/8" 2 84944 Hex Nut, 3/8"
19	254176	1	1 Plate Weld Assembly 1 87414 Lube Fitting, 1/4"-28, Straight 4 88434 Cap Screw, Hex Head, Grade 5, 3/8" x 3/4" 4 80680 Lockwasher, 3/8" 4 84944 Hex Nut, 3/8"
20	254173	1	1 Plate Weld Assembly AR 87366 Plain Washer, 7/8" 1 87398 Cotter Pin, 3/16" x 1 1/4" 4 87872 Cap Screw, Hex Head, Grade 5, 5/16" x 3/4" 4 80664 Plain Washer, 5/16" 4 80681 Lockwasher, 5/16" 4 84943 Hex Nut, 5/16"
21	88275	1	1 Cap Screw, Hex Head, Grade 5, 5/16" x 1 1/2" 2 84943 Hex Nut, 5/16"
22	254194	1	1 Arm Weld Assembly 1 87364 Plain Washer, 1/2" 2 80756 Cotter Pin, 1/8" x 3/4"
23	254193	1	1 Rod 4 80701 Plain Washer, 1/4" 4 81858 Cotter Pin, 1/16" x 1/2"
24	254186	1	1 Channel 2 87872 Cap Screw, Hex Head, Grade 5, 5/16" x 3/4" 2 80664 Plain Washer, 5/16" 2 80681 Lockwasher, 5/16" 2 84943 Hex Nut, 5/16"
25	254187	1	1 Rocker Weld Assembly
26	254190	1	1 Clamping Arm Weld Assembly 1 88028 Grooved Pin, 3/16" x 1"
27	39431	1	1 Spring
28	144403	1	2 Eyebolt 1 80664 Plain Washer, 5/16" 2 84943 Hex Nut, 5/16" 2 84968 Hex Jam Nut, 5/16"
29	254185	1	1 Plate 2 87872 Cap Screw, Hex Head, Grade 5, 5/16" x 3/4" 2 80681 Lockwasher, 5/16" 2 84943 Hex Nut, 5/16"
30	254184	1	2 Clamp
31	00025	2	4 Spring AR 87404 Cap Screw, Hex Head, Grade 5, 1/4" x 2" AR 80701 Plain Washer, 1/4" AR 84060 Hex Locknut, 1/4"
32	28110	3	5 Guide, Twine
33	28114	3	5 "U" Bolt AR 80684 Lockwasher, #10 AR 87304 Hex Nut, #10-24
34	254218	1	1 Arm Weld Assembly
35	45890	2	2 Spring, Brake Pawl 4 80307 Machine Screw, Truss Head, #5 x 3/8" 4 80683 Lockwasher, #5 4 84837 Hex Nut, #5

50 AR - As Required

CONTINUE

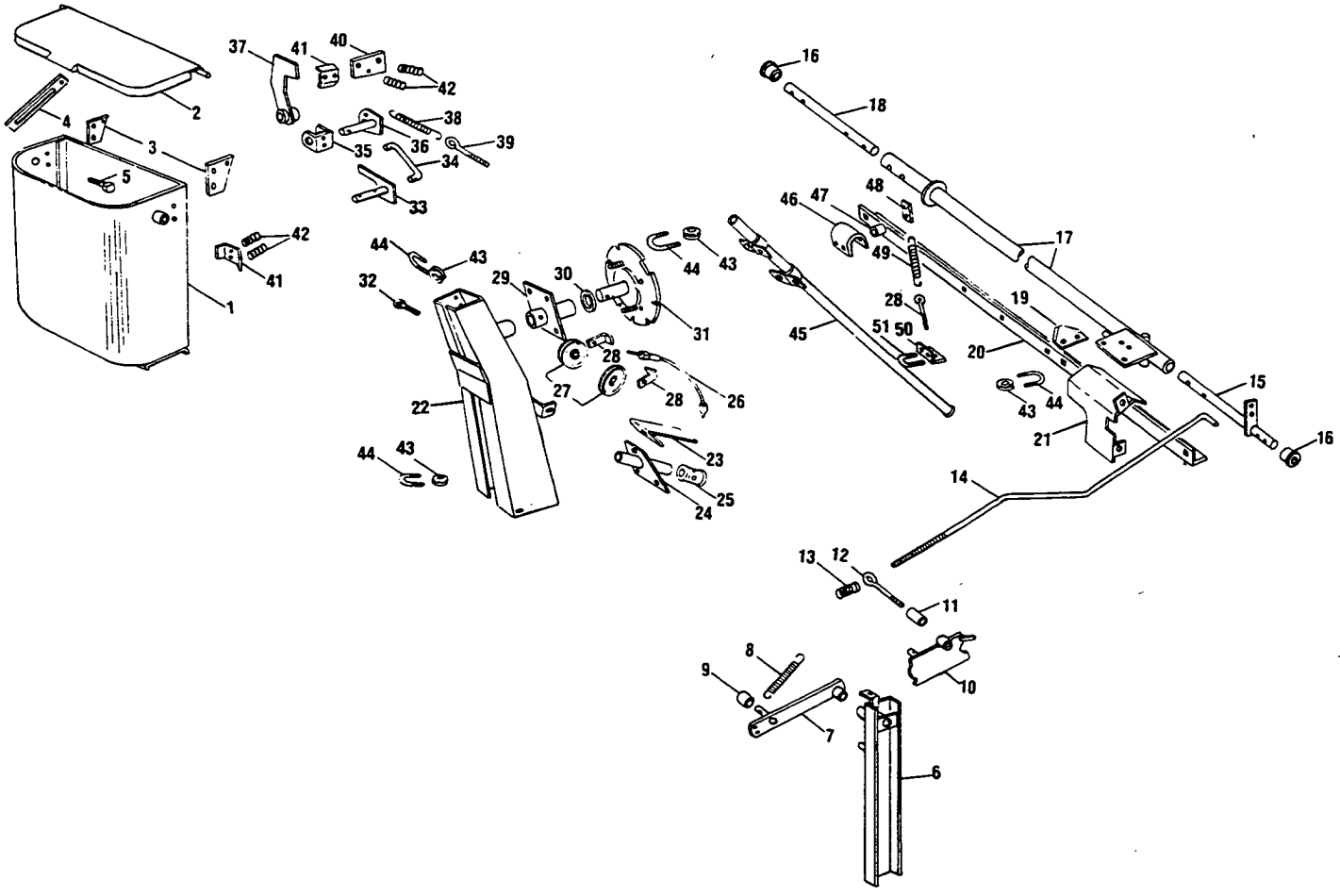
MODEL 850 ROUND BALER
 USED ON AND BELOW SERIAL NO. 434931
 TWINE WRAPPER KIT (CONTINUED)

Ref. No.	Part No.	No. Used		Description
		Man.	Elec.	
36	576728	1	1	Knife Assembly ---Replaces 267642 or 576715 (Incl. Ref. No. 37)
37	574318	1	1	Knife, Twine (Use with 576728 Knife Assembly)
				2 80507 Rivet, Button Head, 5/32" x 7/16"
37A	224922	AR	AR	Knife, Twine (Use with 267642 or 576715 Knife Assemblies)
				2 80507 Rivet, Button Head, 5/32" x 7/16"
38	286547*	1	1	Shield
39	284605	1	1	Rod Weld Assembly
				1 88206 Cap Screw, Hex Head, Grade 5, 3/8" x 1"
				2 80680 Lockwasher, 3/8"
				2 84944 Hex Nut, 3/8"
40	254206	1	1	Tube
				2 88206 Cap Screw, Hex Head, Grade 5, 3/8" x 1"
				2 80702 Plain Washer, 3/8"
				2 80680 Lockwasher, 3/8"
				2 84944 Hex Nut, 3/8"
41	83436	1	1	Cap Screw, Hex Head, Grade 5, 3/8" x 2"
				1 80680 Lockwasher, 3/8"
				1 84944 Hex Nut, 3/8"
42	288996		1	Mount
				2 88434 Cap Screw, Hex Head, Grade 5, 3/8" x 3/4"
				2 80680 Lockwasher, 3/8"
				2 84944 Hex Nut, 3/8"
43	516579		1	Bushing
44	288993		1	Tab
				1 88206 Cap Screw, Hex Head, Grade 5, 3/8" x 1"
				1 80702 Plain Washer, 3/8"
				1 80680 Lockwasher, 3/8"
				1 84944 Hex Nut, 3/8"
45	136524		1	Spring
46	289592		1	Angle
47	262178		1	"U" Bolt
				2 80684 Lockwasher, #10
				2 87304 Hex Nut, #10-24
48	195281		1	Plain Washer, Special

* Used on and above Serial No. 308441

AR - As Required

MODEL 850 ROUND BALER
USED ON AND ABOVE SERIAL NO. 434932
TWINE WRAPPER KIT



MODEL 850 ROUND BALER
USED ON AND ABOVE SERIAL NO. 434932
TWINE WRAPPER KIT

Ref. No.	Part No.	No. Used	Man. Elec.	Description
1	247221	1	1	Box Weld Assembly, Twine 2 84896 Machine Screw, Truss Head, 5/16" x 3/4" 2 80681 Lockwasher, 5/16" 2 84943 Hex Nut, 5/16"
2	254213	1	1	Lid Weld Assembly, Twine Box
3	254215	2	2	Plate 4 88146 Cap Screw, Hex Head, Grade 5, 1/4" x 1" 4 80701 Plain Washer, 1/4" 4 80682 Lockwasher, 1/4" 4 84942 Hex Nut, 1/4"
4	229241	1	1	Latch 1 87872 Cap Screw, Hex Head, Grade 5, 5/16" x 1" 1 280141 Hex Locknut, Grade B, 5/16"
5	88543	1	1	Cap Screw, Hex Head, Grade 5, 5/16" x 1" 2 84968 Hex Jam Nut, 5/16" 1 280141 Hex Locknut, Grade B, 5/16"
6	706654	1	1	Channel Weld Assembly 88775 1 87414 Lube Fitting, 1/4"-28, Straight <i>short</i> 4 88206 Cap Screw, Hex Head, Grade 5, 3/8" x 1" 6 80702 Plain Washer, 3/8" 4 80680 Lockwasher, 3/8" 4 84944 Hex Nut, 3/8"
7	254224	1	1	Latch Plate Weld Assembly 2 80702 Plain Washer, 3/8" 1 80756 Cotter Pin, 1/8" x 3/4"
8	38669	1	1	Spring
9	516914	1	1	Bushing 2 80702 Plain Washer, 3/8" 1 80756 Cotter Pin, 1/8" x 3/4"
10	706657	1	1	Lever Weld Assembly, Trip 1 88775 Lube Fitting, 1/4"-28, Straight 1 80299 Plain Washer, 5/8" 1 87395 Cotter Pin, 1/8" x 1 1/4"
11	11594	1	1	Spacer
12	572710	1	1	Eyebolt 2 80702 Plain Washer, 3/8" 1 88902 Hex Locknut, Grade C, 3/8"
13	42622	1	1	Spring
14	702974	1	1	Rod 3 80702 Plain Washer, 3/8", <i>84944 Hex Nut, 3/8"</i> 1 88902 Hex Locknut, Grade C, 3/8" 1 80743 Cotter Pin, 3/32" x 3/4"
15	574075 609294	1	1	Support Weld Assembly --- <i>Replaces 574075</i> 1 80299 Plain Washer, 5/8" 1 80755 Cotter Pin, 1/8" x 1"
16	44806	2	2	Bushing
17	702934	1	1	Tube Weld Assembly 4 88275 Cap Screw, Hex Head, Grade 5, 5/16" x 1 1/2" 4 80664 Plain Washer, 5/16" 4 280141 Hex Locknut, Grade B, 5/16"
18	573510 609296	1	1	Shaft --- <i>Replaces 573510</i> 2 80299 Plain Washer, 5/8" 1 80755 Cotter Pin, 1/8" x 1"

CONTINUE

MODEL 850 ROUND BALER
 USED ON AND ABOVE SERIAL NO. 434932
 TWINE WRAPPER KIT (CONTINUED)

Ref. No.	Part No.	No. Used	Man. Elec.	Description
19	604810	1	1	Knife, Twine 88816 2 87821 Cap Screw, Hex Socket Head, #10-24 x 3/4 1/2" 2 80684 Lockwasher, #10 2 87304 Hex Nut, #10-24
20	268947	1	1	Angle 2 88682 Carriage Bolt, Grade 5, 3/8" x 1" # 80702 Plain Washer, 3/8" 2 80680 Lockwasher, 3/8" 2 84944 Hex Nut, 3/8"
21	717007	1	1	Shield 2 87872 Cap Screw, Hex Head, Grade 5, 5/16" x 3/4" 2 80681 Lockwasher, 5/16" 2 84943 Hex Nut, 5/16"
22	254197	1	1	Frame Weld Assembly 2 88206 Cap Screw, Hex Head, Grade 5, 3/8" x 1" 2 88434 Cap Screw, Hex Head, Grade 5, 3/8" x 3/4" 2 80702 Plain Washer, 3/8" 4 80680 Lockwasher, 3/8" 4 84944 Hex Nut, 3/8"
23	261058	1	1	Shield
24	254179	1	1	Support Weld Assembly 1 87414 Lube Fitting, 1/4"-28, Straight 3 87872 Cap Screw, Hex Head, Grade 5, 5/16" x 3/4" 3 80681 Lockwasher, 5/16" 3 84943 Hex Nut, 5/16"
25	261061	1		Drum, Cable 1 88452 Pin, Grooved, 3/16" x 1 1/4"
	288505	1		Drum, Cable 1 572364 Pin, Grooved, Type "E", 3/16" x 7/8"
26	261868	1		Cable Assembly 1 84949 Hex Nut, 1/4", N.F. 1 88098 Hex Jam Nut, 1/4", N.F.
	570503	1		Cable Assembly 1 84949 Hex Nut, 1/4", N.F. 1 88098 Hex Jam Nut, 1/4", N.F.
27	48718	2	2	Sheave
28	47306	2	2	Guard, Sheave 2 88044 Cap Screw, Hex Head, Grade 5, 3/8" x 1 1/2" 2 80702 Plain Washer, 3/8" 2 80680 Lockwasher, 3/8" 2 84944 Hex Nut, 3/8"
29	254176	1	1	Plate Weld Assembly 1 87414 Lube Fitting, 1/4"-28, Straight 4 88434 Cap Screw, Hex Head, Grade 5, 3/8" x 3/4" 4 80680 Lockwasher, 3/8" 4 84944 Hex Nut, 3/8"
30	195281	1 AR	1 AR	Plain Washer, Special
31	254173	1	1	Plate Weld Assembly AR 87366 Plain Washer, 7/8" 1 87398 Cotter Pin, 3/16" x 1 1/4"
32	88275	1	1	Cap Screw, Hex Head, Grade 5, 5/16" x 1 1/2" 2 84943 Hex Nut, 5/16"
33	254194	1	1	Arm Weld Assembly 1 87364 Plain Washer, 1/2" 2 80756 Cotter Pin, 1/8" x 3/4"

AR - As Required

MODEL 850 ROUND BALER
 USED ON AND ABOVE SERIAL NO. 434932
 TWINE WRAPPER KIT (CONTINUED)

Ref. No.	Part No.	No. Used Man. Elec.	Description
34	254193	1 1	Rod 4 80701 Plain Washer, 1/4" 4 81858 Cotter Pin, 1/16" x 1/2"
35	254186	1 1	Channel 2 87872 Cap Screw, Hex Head, Grade 5, 5/16" x 3/4" 2 80664 Plain Washer, 5/16" 2 80681 Lockwasher, 5/16" 2 84943 Hex Nut, 5/16"
36	254187	1 1	Rocker Weld Assembly
37	254190	1 1	Clamping Arm Weld Assembly 1 88028 Grooved Pin, 3/16" x 1"
38	39431	1 1	Spring
39	144403	1 2	Eyebolt 1 80664 Plain Washer, 5/16" 2 84943 Hex Nut, 5/16" 2 84968 Hex Jam Nut, 5/16"
40	254185	1 1	Plate 2 87872 Cap Screw, Hex Head, Grade 5, 5/16" x 3/4" 2 80681 Lockwasher, 5/16" 2 84943 Hex Nut, 5/16"
41	254184	1 2	Clamp
42	00025	3 3	Spring 4 87404 Cap Screw, Hex Head, Grade 5, 1/4" x 2" 4 80701 Plain Washer, 1/4" 4 84060 Hex Locknut, 1/4"
43	28110	3 5	Guide, Twine
44	28114	3 5	"U" Bolt AR 80684 Lockwasher, #10 AR 87304 Hex Nut, #10-24
45	706653	1 1	Tube Weld Assembly 4 87872 Cap Screw, Hex Head, Grade 5, 5/16" x 3/4" 4 80664 Plain Washer, 5/16" 4 80681 Lockwasher, 5/16" 4 84943 Hex Nut, 5/16"
46	288996	1	Mount 2 88434 Cap Screw, Hex Head, Grade 5, 3/8" x 3/4" 2 80680 Lockwasher, 3/8" 2 84944 Hex Nut, 3/8"
47	516579	1	Bushing
48	288993	1	Tab 1 88206 Cap Screw, Hex Head, Grade 5, 3/8" x 1" 1 80702 Plain Washer, 3/8" 1 80680 Lockwasher, 3/8" 1 84944 Hex Nut, 3/8"
49	136524	1	Spring
50	289592	1	Angle
51	262178	1	"U" Bolt 2 80684 Lockwasher, #10 2 87304 Hex Nut, #10-24

AR - As Required

NUMERICAL PARTS INDEX

Part No.	Ref. No.	Page No.	Part No.	Ref. No.	Page No.	Part No.	Ref. No.	Page No.	Part No.	Ref. No.	Page No.
00015	23	31	40242	14	14	65319	1	5	126942	17	5
00016	16	31	40305	23	5		6	13	127361	22	18
00025	31	50	40662	6	17		27	24	127434	26	18
	42	55	41261	7	21	66460	14	31	127561	6	21
11594	11	53	42019	31	27	66488	26	14	128104	28	27
12084	15A	31	42365	27	6	66553	15	31	128375	6	7
12158	2	23		3	43	66614	21	31	128542	26	6
12192	36B	19	42622	13	53	66812	22	46	128817	2	37
15081	11	43	43278	14	14	66967	36	15	128825	3	37
25193	32	18	44612	44	19		21	24	129979	13	39
25447	20	21	44806	16	53		26	27	129982	12	39
25448	21	21	45367	10	13	70047	1	42	129987	15	17
25810	32	18	45890	35	50	70643	1	42	130357	13	17
25858	17	9	45960	29	46	76346	10	37	130358	2	23
26260	39	15	46041	10	23	76355	7	37	130891	21	18
	42	28	46432	15	45	100381	5	45	131376	6	45
	28	46	46810	15	33	104362	8	39	131377	4	13
26301	16	21		15	35	116150	8	9		29	24
26307	11	23	47306	18	50	117441	30	27	131573	5	13
26392	19	9		28	54	118804	30	14		28	24
26402	21	9	47325	32	10		13	23	131576	6	13
	13	13	47941	14	5	121091	25	18		27	24
	18	27	48718	17	50	121092	30	18	131673	19	18
26538	7	7		27	54	121506	4	9	132425	25	6
26981	21	5	48976	9	33	121512	5	5			7
26995	1	42		9	35	121602	9	17	132709	14	21
28110	32	50	48977	10	33	122264	1	33	132710	15	21
	43	55		10	35	122268	4	33	133246	23	46
28114	33	50	49633	9	13		4	35	134018	4	21
	44	55	49683	29	18	122271	21	33	134019	5	21
28246	8	33	49686	28	18		19	35	134020	3	21
	8	35	49693	19	5	122272	21	33	134021	2	21
28285	42	19	49694	18	5		19	35	134921	20	18
28691	5	30	49696	15	5	122273	21	33	136137	18	18
29214	4	5	49792	22	18		19	35	136376	13	21
29534	32	46	49894	47	46	122274	21	33	136377	12	21
32308	19	31	50564	34	19		19	35	136521	16	18
33323	9	40	50600	9	7	122275	21	33	136524	45	51
33781	7	43	50641	1A	9		19	35		49	55
34097	38	10	52367	34	10	122276	5	33	136525	12	17
34187	44	19	52443	27	14		5	35	136542	24	18
34780	20	5	52444	28	14	122277	5	33	136554	14	17
35469	31	18	52481	9	30		5	35	136560	27	18
35717	10	43	54478	13	13	122278	22	33	136735	8	17
36723	6	9	54695	17	18		21	35	136736	7	17
36726	7	9	54770	16	18	122280	16	33	139393	12	37
37851	8	43	56760	13	5		16	35	140774	22	31
38027	1	45	56800	16	5	122281	2	33	140775	22	31
38669	8	49	56801	12	5		2	35	140776	22	31
	8	53	58118	7	30	122483	1	7	141451	23	9
38766	7	5	58792	37	15	126002	13	33		20	27
38767	9	5		18	23		13	35	141495	32	18
38814	35	28		23	27	126003	14	33	143183	17	21
39431	27	50	58880	2	43		14	35	143823	11	9
	38	55	59273	14	45	126004	12	33	144403	18	31
39853	3	33	63769	35	19	126005	6	33		28	50
	3	35	63828	13	27		6	35		39	55
									144963	30	24

NUMERICAL PARTS INDEX (CONTINUED)

Part No.	Ref. No.	Page No.	Part No.	Ref. No.	Page No.	Part No.	Ref. No.	Page No.	Part No.	Ref. No.	Page No.
144963	12	31	235782	10	40	254179	24	54	257598	35	10
161097	15	9		8	41	254184	30	50	258582	16	27
163902	5	7	235783	3	40		41	55	258604	43	28
163962	2	30	236068	22	5	254185	29	50	258832	7	13
164380	3	39	236212	22	24		40	55	259161	32	28
165354	5	5	236220	25	24	254186	24	50	259245	1	37
165355	10	5	236440	11	17		35	55	259256	5	43
165357	11	5	236448	4	17	254187	25	50	259277	41	28
166300	3	9	236449	5	17		36	55	259542	36	10
166327	5	9	236454	2	17	254190	26	50	259655	3	30
166704	31A	18	236535	12	38		37	55	259656	4	30
167169	14	45		15	39	254193	23	50	259658	6	30
168982	12	45	237296	40	46		34	55	259925	40	15
169703	12	7	237980	19	45	254194	22	50		37	28
172434	32	14	238107	25	14		33	54	259977	17	33
182692	12	9	238943	41	46	254197	12	49	261016		33
185846	10	27	241104	42	46		22	54	261058	13	49
185847	12	27	244457	37	10	254206	40	51		23	54
185848	11	27	244472	18	9	254213	2	49	261061	15	49
187084	11	9	245308	3	17		2	53		25	54
189369	6A	27	245312	33	15	254215	3	49	261613	3	23
195281	48	51		17	23		3	53	261615	22	9
	30	54		22	27	254216	6	49		19	27
195903	39	46	245642	1	17	254218	34	50	261868	16	49
196033	12	9	245948	10	30	254224	7	49		26	54
196703	10	30	246219	36	19		7	53	261883	8	23
197717	3	42	246226	37	19	254226	11	49	261884	7	23
198056	11	9	246233	39	19	254920	12	43	261886	4	23
200734	19	21	246348	22	18	255536	32	24	261892	12	23
203255		42		23	18	256035	24	5	262101		19
217114	2	39	246654	3	27	256234	28	10	262178	47	51
217391	4	7	246656	8	27	256527	8	13		51	55
217392	3	7	246657	7	27	256528	2	13	262268	14	14
218784	8	7	247221	1	49	256723	31	24	263179	6	23
218788	2	7		1	53	257002	34	28	263180	5	23
222436	11	45	247710	15	37	257015	33	28	264616	13	31
222437	8	45	249062	15	17	257016	2	27	265239	35	24
222782	4	45	249100	44	15	257018	1	27	265328	23	24
222783	10	45		16	23	257098	3	13	265329	24	24
222794	9	45		21	27	257099	1	13	265344	29	14
224894	31	46	249128	10	9	257171	1	43	265415	11	33
224895	43	46	251493	1	5	257183	24	14		11	35
224922	37	51	251533	43	19	257195	17	31	266224	33	24
225180	21	46	251746	14	9	257269	11	13	266232	36	28
225183	24	46	252309	11	37	257270	11	30	266385	6	5
226871	13	9	252724	31	10	257272	12	13	267505	3	5
228519	45	46	252725	33	10	257286	30	10	267630	14	14
228661	44	46	252730	25	10	257312	22	31	268118	43	15
228662	46	46	252732	26	24	257375	22	14		40	28
228813	13	9	253624	35	15	257376	23	14	268382	33	19
229101	48	46		20	24	257377	21	14	268412	22	18
229241	4	49		25	27	257378	20	14		23	18
	4	53	254173	20	50	257379	18	14	268418	23	18
229709	29	10		31	54	257380	19	14	268419	23	18
229760	20	31	254176	19	50	257460	9	27	268634	31	14
235758	2	38		29	54	257470	2	9	269491	8	5
235759	4	40	254179	14	49	257597	40	19	272220	10	38
									272748	4	38

CONTINUE

NUMERICAL PARTS INDEX (CONTINUED)

Part No.	Ref. No.	Page No.	Part No.	Ref. No.	Page No.	Part No.	Ref. No.	Page No.	Part No.	Ref. No.	Page No.
272748	5	39	287101	25	46	571569	34	15	702352	16A	5
272749	5	38	288505	15	49		19	24	702353	15A	5
	6	39		25	54		24	27	702354	18A	5
272751	3	38	288692	5	37	571571	41	15	702378	14	14
	4	39	288693	6	37		39	28	702516	14A	31
272753	11	38	288947	20	54	571844	7	45	702684	38	24
	14	39	288993	44	51	572041	A	45	702934	17	53
273231	7	38		48	55	572364	15	49	702974	14	53
273241	7	39	288996	42	51		25	54	704032	2	17
273242	16	39		46	55	572621	12	35	704554	10	30
273243	11	39	289592	46	51	572710	12	53	704591	6	30
273244	1	39		50	55	573003	35A	19	705520	2	5
273245	9	39	511953	2	40	573004	36A	19	705692	1	13
273260	37	24		2	41	573510	18	53	705693	3	13
283032	9	43	512016	11	40	574001	41	19	705694	26	10
283033	6	43		10	41	574075	15	53	705895	24	9
283042	15	27	512116	38	46	574318	37	51	705898	14	23
283489	7	33	516579	43	51	574461	38	10	705899	15	23
	7	35		47	55	574472	10	21	706078	42A	28
283517	38	19	516914	2	43	575902	34	19	706079	43A	28
283536	27	10		10	49	575988	9	23	706637	27	27
283579		38		9	53	576179	5	27	706638	29	27
284448	20	46	523227	1	40	576267	39	24	706653	45	55
284449	30	46		1	41	576407	17	13	706654	6	53
284605	39	51	523228	8	40	576447	4	37	706657	10	53
285072	2	33		7	41			39	706805	1	30
	2	35	524088	6	40	576728	36	51			35
285263	33	46		5	41	577163	1	35	707507	1	23
285264	35	46	524089		40	577165	20	35	707803	16	37
285265	36	46	528549	9	41	577167	17	35	708342	18	33
285273	34	46	528550	3	41	577223	2	17	708460	16	9
285353	2	45	528551	17	37	577437	4	17	708957	1	9
285442	13	45			41	577438	5	17	709000	1	23
285444	3	45	529034	6	41	577486	1	9	709223	33	10
285725	14	14	529340	12	40	577585	16	13	709979	6	27
285837	8	45		11	41	578148	11	21	709987	4	27
285961	49	46	570503	16	49	578189	10	17	710395	14	14
286069	36	24		26	54	578471	8	45	711359	17	45
286256	26	46	570504	1	9	578822	1	21	711360	18	45
286547	38	51	570971	14	27	604810	19	54	711957	34	24
286632	16	45	571295	13A	31	605032	8	30	712116	15	14
286826	38	24	571382	2	17	606156	7	13	712745	2A	45
									712886		42
									713309	42	15
										38	28
									717007	21	54
									717313	18	35

**FORD**
NEW HOLLAND**PARTS CATALOG COMMENT CARD**

DEALER CODE		DEALER NAME			
ADDRESS		CITY	STATE/PROV.	ZIP/POSTAL	
CATALOG NO.		MODEL NO.	SUPPLEMENT NO.	PUBLICATION DATE	
PAGE NO.	REF. NO.	REMARKS			
COMMENTS					
DATE RECEIVED		DATE CORRECTED	VERIFIED BY		
207070 9/92					

PRINTED IN USA

**FORD**
NEW HOLLAND**PARTS CATALOG COMMENT CARD**

DEALER CODE		DEALER NAME			
ADDRESS		CITY	STATE/PROV.	ZIP/POSTAL	
CATALOG NO.		MODEL NO.	SUPPLEMENT NO.	PUBLICATION DATE	
PAGE NO.	REF. NO.	REMARKS			
COMMENTS					
DATE RECEIVED		DATE CORRECTED	VERIFIED BY		
207070 9/92					

PRINTED IN USA

**FORD**
NEW HOLLAND**PARTS CATALOG COMMENT CARD**

DEALER CODE		DEALER NAME			
ADDRESS		CITY	STATE/PROV.	ZIP/POSTAL	
CATALOG NO.		MODEL NO.	SUPPLEMENT NO.	PUBLICATION DATE	
PAGE NO.	REF. NO.	REMARKS			
COMMENTS					
DATE RECEIVED		DATE CORRECTED	VERIFIED BY		
207070 9/92					

PRINTED IN USA

**FORD**
NEW HOLLAND**PARTS CATALOG COMMENT CARD**

DEALER CODE		DEALER NAME			
ADDRESS		CITY	STATE/PROV.	ZIP/POSTAL	
CATALOG NO.		MODEL NO.	SUPPLEMENT NO.	PUBLICATION DATE	
PAGE NO.	REF. NO.	REMARKS			
COMMENTS					
DATE RECEIVED		DATE CORRECTED	VERIFIED BY		
207070 9/92					

PRINTED IN USA

PLACE
STAMP
HERE

PLACE
STAMP
HERE



**PRODUCT ANALYSIS AND PUBLICATIONS
MAIL STATION 514
FORD NEW HOLLAND, INC.
P O BOX 1895
NEW HOLLAND PA 17557-0903**



**PRODUCT ANALYSIS AND PUBLICATIONS
MAIL STATION 514
FORD NEW HOLLAND, INC.
P O BOX 1895
NEW HOLLAND PA 17557-0903**

PLACE
STAMP
HERE

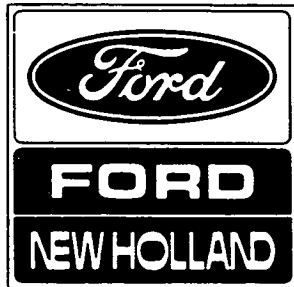
PLACE
STAMP
HERE



**PRODUCT ANALYSIS AND PUBLICATIONS
MAIL STATION 514
FORD NEW HOLLAND, INC.
P O BOX 1895
NEW HOLLAND PA 17557-0903**



**PRODUCT ANALYSIS AND PUBLICATIONS
MAIL STATION 514
FORD NEW HOLLAND, INC.
P O BOX 1895
NEW HOLLAND PA 17557-0903**



REPLACES ALL PREVIOUS ISSUES